

TODAY'S MATCH  
SPONSORED BY;

THE HOLIDAY INN  
PIPERS WAY  
SWINDON

S  
W  
I  
N  
D  
O  
N



**BARCLAYS** DIVISION TWO

**BRADFORD CITY**

TUESDAY 6th MARCH 1990  
KICK OFF 7.30 p.m.

OFFICIAL CLUB SPONSOR



OFFICIAL  
PROGRAMME

80p



# People and events in the news at the County Ground

## SWINDON TOWN APPEARANCES 1989/90

(Up to and including February 13th 1990)

|                  | TOTAL  | League<br>Div. 2 | L'woods<br>Cup | F.A.<br>Cup | Z.D.S.<br>Cup |
|------------------|--------|------------------|----------------|-------------|---------------|
| Ossie Ardiles    | 0 + 2  | 0 + 2            | -              | -           | -             |
| Paul Bodin       | 35 + 3 | 23 + 3           | 8              | 1           | 3             |
| Colin Calderwood | 43     | 31               | 8              | 1           | 3             |
| Shaun Close      | 4 + 6  | 4 + 2            | 0 + 4          | -           | -             |
| John Cornwell    | 7 + 17 | 2 + 13           | 2 + 3          | -           | 0 + 1         |
| Fraser Digby     | 43     | 31               | 8              | 1           | 3             |
| Steve Foley      | 20 + 2 | 13 + 2           | 3              | 1           | 3             |
| Tony Galvin      | 6 + 8  | 6 + 5            | 0 + 3          | -           | -             |
| Jon Gittens      | 37     | 25               | 8              | 1           | 3             |
| Dave Hockaday    | 14 + 4 | 10 + 3           | 4              | 0 + 1       | -             |
| Paul Hunt        | 2 + 4  | 2 + 2            | 0 + 2          | -           | -             |
| Tommy Jones      | 38 + 2 | 28 + 1           | 6 + 1          | 1           | 3             |
| David Kerslake   | 20     | 14               | 2              | 1           | 3             |
| Ross Maclaren    | 43     | 31               | 8              | 1           | 3             |
| Alan McLoughlin  | 42 + 1 | 31               | 7 + 1          | 1           | 3             |
| Duncan Shearer   | 39     | 27               | 8              | 1           | 3             |
| Fitzroy Simpson  | 17 + 6 | 11 + 5           | 6 + 1          | -           | -             |
| Nicky Summerbee  | 0 + 1  | 0 + 1            | -              | -           | -             |
| Steve White      | 38 + 1 | 27 + 1           | 7              | 1           | 3             |

## DIVISION TWO 1989/90: TOP MARKSMEN

(Up to and including February 24th 1990)

- |   |   |
|---|---|
| 26 - Mick Quinn (Newcastle United)        | 13 - Nicky Cross (Port Vale)            |
| 25 - Andy Ritchie (Oldham Athletic)       | Paul Moulden (A.F.C. Bournemouth)       |
| Bernie Slaven (Middlesbrough)             | Jimmy Quinn (West Ham, 7 for Bradford)  |
| 20 - Steve Bull (Wolverhampton Wanderers) | Andy Thomas (Plymouth Argyle)           |
| 19 - Duncan Shearer (Swindon Town)        | Tommy Tynan (Plymouth Argyle)           |
| 18 - Marco Gabbiadini (Sunderland)        | Paul Wilkinson (Watford)                |
| Steve White (Swindon Town)                | 12 - Darren Beckford (Port Vale)        |
| 17 - Luther Blissett (A.F.C. Bournemouth) | Lee Chapman (Leeds, 8 for Notts Forest) |
| Mark McGhee (Newcastle United)            | Andy Payton (Hull City)                 |
| Guy Whittingham (Portsmouth)              | 11 - Bobby Davison (Leeds United)       |
| 16 - Don Goodman (West Bromwich Albion)   | John Durnin (Oxford United)             |
| Alan McLoughlin (Swindon Town)            | Andy Kennedy (Blackburn Rovers)         |
| 14 - Brian Deane (Sheffield United)       | Roger Palmer (Oldham Athletic)          |
| Simon Garner (Blackburn Rovers)           | Stuart Slater (West Ham United)         |
| Gordon Strachan (Leeds United)            |   |



# WELCOME TO THE PLAYERS, SUPPORTERS AND OFFICIALS OF BRADFORD CITY

## MARTY SMITH'S MATCHFACTS



• Martyn Smith

▼ WEST HAM UNITED  
on SUNDAY FEBRUARY 18th 1990  
at THE COUNTY GROUND  
BARCLAYS LEAGUE DIVISION TWO

WEATHER CONDITIONS: Dry with some sun.

West Ham United Team:

1. Misloska
2. Robson
3. Dicks
4. Parris
5. Martin
6. Gale
7. Brady
8. Allen
9. Quinn
10. Slater
11. Keen

SWINDON TOWN SUBSTITUTES:

12. Hockaday (not used)
14. Close (not used)

WEST HAM SUBSTITUTES:

12. Bishop (Slater (74 min))
14. Kelly/Keen (63 min)

SWINDON TOWN BOOKINGS:

None

WEST HAM BOOKINGS:

Dicks (41 min)

FIRST HALF DURATION:

45 minutes 37 seconds

SECOND HALF DURATION:

47 minutes 22 seconds

GOALS:

Swindon Town

White (42 min, 1 sec)

Maclaren (66 min, 25 sec)

West Ham

Quinn (30 min, 1 sec)

Quinn (70 min, 8 sec)

GOAL ATTEMPTS ON TARGET:

Swindon Town:

Shearer (20 min)

Shearer (49 min)

Shearer (63 min)

McLoughlin (60 min)

Jones (37 min)

Shearer (90 min)

West Ham:

Quinn (59 min)

Kelly (76 min)

CORNERS:

First Half:

Swindon Town

0

Second Half:

4

West Ham

2

1

REFEREE: V. Callow

LINESMEN: M. Godfrey and D. Madgwick.

## S.T.F.C. SUPPORTERS SOCIAL CLUB

Are holding a  
Table Top Sale  
on Sunday March 11th  
11.00 a.m. till 3.00 p.m.  
£5.00 per site on the day  
£4.00 advanced booking  
Ring R. Manners on 521570

★ ★ ★

## TICKET ARRANGEMENTS

Oxford United

▼

Swindon Town

Saturday March 24th 1990

## THIS IS AN ALL-TICKET MATCH FOR SWINDON SUPPORTERS

Tickets now available from the main  
office at Swindon Town Football  
Club during normal office hours  
9.00 a.m. - 5.00 p.m. Monday - Friday  
9 a.m. - 12 noon Saturday

## STAND SEATS

Season Ticket Holders only

£7.50

£6.50 restricted vision

## TERRACE TICKETS

£5.00

★ ★ ★

## TICKET ARRANGEMENTS

Blackburn Rovers

▼

Swindon Town

Saturday April 16th 1990

THERE ARE

**NO STAND SEATS AVAILABLE  
TO SWINDON TOWN FANS** for  
the above match. All Swindon Town  
fans should use the Darwen End  
Terrace. This is a covered terrace  
and entry to the game will be £4.00.

★ ★ ★

## HE'S IN THE SAFEST HANDS IN SWINDON

Congratulations to Fraser and his  
wife Tracey on the birth of their son  
Joshua. Son and mother are both  
doing fine.

# SWINDON TOWN FOOTBALL CLUB

County Ground  
Swindon

Our telephone numbers are as follows

Main Switchboard (general Enquiries): **642984**  
Commercial Department: **Ext 30 or 31**  
Sports Shop: **Ext 29**  
Travel Club: **Tel: 611499**  
Rendezvous Club: **Tel: 35130**

Please note that when calling from outside  
Swindon you should first dial 0793.

## President

C. Green

## Executive Directors

Chairman: B. Hillier

Vice Chairman: G. W. Herbert

C. Howard

I. Smart

N. Arkell

## Non-Executive Directors

D. Alderton

R. Mattick J.P. (Company Secretary)

R. Kearsey

## Commercial Manager

D. Buswell

## Team Manager

O. Ardiles

## Assistant Manager

P. Bates

## Coach

A. Rowland

## Youth Team Manager

J. Trollope

## Physiotherapist

K. Morris

## Groundsman

G. Warren

## Maintenance Officers

M. Hughes

## Kit Manager

B. Crewe

## Receptionists

Miss L. Maberley

Miss J. Edwards

Miss M. McDonald

## Sports Shop Manager

D. Woodman

## HONOURS

### Football League Cup

Winners: 1969

Semi-Finalists: 1980

### Anglo Italian Cup

Winners: 1970

### Football League Division Two

Play-Off Semi Finalists: 1989

### Football League Division Three

Runners-Up: 1963, 1969

Play-Off Winners: 1987

### Division Four

Champions: 1986 (with record 102 points)

### F.A. Cup

Semi-Final: 1910, 1912

### F.A. Charity Shield

Semi-Finalists: 1911

### F.A. Youth Cup

Finalists: 1964

The official programme of Swindon Town  
Football Club

Printed by Thamesdown Litho

Individual contributions made to our matchday magazine  
do not necessarily reflect the views of the Club.

# THE WINNING COMBINATION





## **FIRST FOR SPORT IN WILTSHIRE**

We offer the most comprehensive sports  
coverage in the county.

Tune to 97.2 or 102.2 MHz for updates at:

06.45      07.45      08.45      13.10      17.15

Plus our weekend coverage starting on Friday  
at 17.15 with the exclusive Swindon Town  
coverage featuring Ossie Ardiles, players and  
management from the County Ground.

Saturday sport is a full four hours starting at  
14.00 with detailed match coverage and  
radio's first classified football results at 16.55.



Good evening ladies and gentlemen, welcome once again to the County Ground.

Although our last two games have ended in draws we are still in the race for promotion.

The match against West Ham United was one we should have

The match at Portsmouth followed the same pattern with chances being created but not being put away.

Portsmouth caught us cold right from the kick-off and scored within the first minute of the match.

Although we

the ball in the Portsmouth net, however the linesman thought otherwise and Alan was given offside

After the match the first team squad flew off for a much needed break in the sunshine of Spain. We have already played forty two matches and a break in the sun should put us in good fettle for the last couple of months of the season. To keep us in trim we are playing a friendly against the local team.

Congratulations to Steve and Fraser on the birth of their sons Joseph and Joshua respectively. Best wishes to mums Mandy and Tracey.



## Ossie Ardiles

won on the chances that we created. I thought, when Ross MacLaren put us in front, that we would go on to win. Jimmy Quinn however had other ideas and we had to settle for one point.

dominated the game for long periods our only reward was another Alan McLoughlin goal.

We thought we had taken all the points when Alan again put



● Fraser Digby – recently became a father.

Swindon Supporters in London Association sponsor Ossie Ardiles' kit.

CONTACT: Nick Coote

Paul Donkersley

David Mouland

01-828 1437

01-870 0316

01-347 9845

THE BOSS





# **LEMON & CO**

## **SOLICITORS**

*A SUBSTANTIAL PRACTICE ABLE TO  
PROVIDE ADVICE & HELP IN ALL  
ASPECTS OF COMMERCIAL & PRIVATE LIFE  
AND INCLUDING A FRIENDLY, THOROUGH  
AND PROFESSIONAL CONVEYANCING  
SERVICE*

**Richard Fry, Timothy Dixon, Deirdre Moss**  
**34 Regent Circus**  
**Swindon SN1 1PY**  
**Tel: SWINDON 27141**  
**Fax: SWINDON 614168**

**Martin Evans, Stephen Moss**  
**148 High Street**  
**Wootton Bassett SN4 7AB**  
**Tel: SWINDON 853665**  
**Fax: SWINDON 850324**

**Richard Challis, David Halfhead**  
**1 Little London Court**  
**Old Town, Swindon SN1 3HY**  
**Tel: SWINDON 27141**  
**Fax: SWINDON 511639**





## Paul Plowman

### OUR HISTORIAN LOOKS BACK AT SOME PREVIOUS MEETINGS BETWEEN SWINDON TOWN AND TONIGHT'S OPPONENTS

Today will be the 16th meeting between Swindon Town and Bradford City – and a home win this evening would make League honours exactly even over 14 contests.

The first meeting will be one that the former Swindon player Cliff Jackson will never forget. At just 17 years and 21 days, Cliff made his League debut when Bradford visited the County Ground on September 24 1958.

#### FIRST AND LAST

City threatened to spoil his big day when they led 2-0 with only ten minutes left. Lew Clayton – twice Cliff's age – pulled a goal back three minutes from time and then, with almost the last kick of the game, young Jackson struck an equaliser. As one

career had just begun, so another had come to an end. For this was to be the last League game for wing-half Clayton. Seven weeks later he left for Wisbech Town.

The return fixture at Valley Parade a week later begun as sensationally as the last had finished – with a Swindon goal. Just 22 seconds had registered on the clock when Jim Kelly found the target. But Derek Stokes fired City level only two minutes later. Kelly had the last laugh, however, with what proved to be a winner in the 58th minute. It was his fifth away goal in five days, having previously hit a 16-minute hat-trick at Chesterfield!

Swindon have not won in Bradford in the 31 years since – not even at Park Avenue.

#### EIGHT GOALS

At the County Ground in August 1959, a 38th-minute goal from the Town's John Richards gave little indication of what was to come after the interval. Jimmy Gauld and Richards had put Swindon 3-0 up inside two minutes, but then City replied with two in three minutes, from John McCole and Bob Webb. Richards raced to the other end to complete his hat-trick on the hour, only to see Webb pull the score back to 4-3 five minutes later. The drama was brought to a close when Gauld added his second and the Town's fifth with twelve minutes remaining.

Cliff Jackson had not appeared in the Third Division side during 1959/60, but he joined several other teenagers in the Swindon line-up in the following season. Jackson got on the scoresheet as early as the 4th minute at Valley Parade in October, but it was not Cliff, but one of his namesakes for Bradford. David and twin brother Peter appeared for City and it was the former who was the successful marksman on this occasion. Cliff was not to be outdone, but he had to

wait until six minutes from time before finding the net and the Town went down 2-1.

Swindon were far more successful in the following March, recording their best margin of victory over the Yorkshire Club. Mike Summerbee set them on the way with a 28th-minute opener, but three in the space of thirteen minutes in the second half wrapped up the points. Ernie Hunt grabbed two, one from a penalty and Bobby Woodruff claimed the fourth.

#### PETER STILL THE HERO

Sixteen years passed before the Clubs met again, in October 1977. The Town, in seventh place in the Third Division and fresh from a 5-0 win four days earlier, played hosts to 23rd-placed Bradford. But former 'keeper Peter Downsborough, who had given the performance of his life at Wembley eight years earlier, came back to produce another 90 minutes of defiance and help City to their only away win that season. Joe Cooke netted the only goal of the night. Don Hutchins scored twice in the return fixture in the following April, but the 2-1 win came too late to save Bradford from a quick return to the Fourth Division.

The Valley Parade ground was the venue for Swindon's first game back in the Second Division in August 1987, but a rather tame performance saw them return to Wiltshire with no goals and no points. When City came to the County Ground in the January, events were far from tame. They conceded a 15th minute goal to Jimmy Quinn, who would later sign for the Club. He then had a penalty saved by 'keeper Paul Tomlinson, but Phil King put the Town 2-0 up four minutes later. Colin Calderwood soon added a third, but it was all to no avail as fog, which had already held up the game, brought it to a premature end.

RECORD BOOK







# WALKER JACKSON

IVECO  
Ford  
TRUCK



# Check Ford First.

## Take power. Supreme power.



£39.56

SUREPOWER 077  
MOST FIAT, FSO  
LADA RIVA.

40% OFF  
RRP

£33.63

MOTORCRAFT  
ECONOPOWER 083  
FIESTA 1.0, 1.1, 1.3, 1.6.

£21.07

MOTORCRAFT  
ECONOPOWER 036A  
AUSTIN METRO.

£39.15

MOTORCRAFT  
SUPERPOWER 085  
ESCORT 1.1, 1.3, 1.6.

£39.15

SUREPOWER 063  
VAUXHALL CAVALIER  
1.3, 1.6, 1.8.

£46.50

SUREPOWER 093  
ESCORT, FIESTA  
DIESELS.

### EVEN SOBER DRIVERS GET STONED HEADLAMP COVERS FOR STYLE AND PROTECTION

A 4.546 LITRE CAN 10/30, 20/50, OR 15/40 SF/CD  
MULTIGRADE OIL, PLUS OIL FILTER

TO FIT FORD KL, OHC, CVH, BL AND V ENGINES  
ALSO SOME

PEUGEOT, RELIANT, RENAULT,  
SAAB, TALBOT, TOYOTA  
AND VOLVO ENGINES



INC. VAT  
**£6.50**



BEFORE

1986 MODEL  
ESCORT

£27.58

SCORPIO, GRANADA

£34.46



AFTER

### Protection

The product evolved as a method of effectively protecting headlights and flashers, thus eliminating the high cost of replacing damaged sealed-beam headlamp units. Our covers are manufactured from tough, hard wearing 3mm cast acrylic sheet.

## MOTORCRAFT SUPER PLUS

### Antifreeze?

YOUR ALL YEAR  
ROUND ENGINE  
SAFEGUARD.



£2.99

1 LITRE

£5.32

2 LITRES

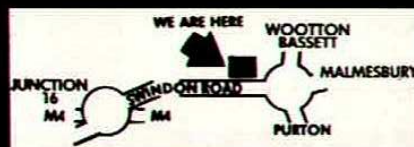
£10.43

4 LITRES

MOTORCRAFT SUPER PLUS IS THE ONLY ANTIFREEZE RECOMMENDED  
FOR USE IN FORD VEHICLES PRODUCED SINCE AUGUST 1980

# OPEN ALL DAY SATURDAY

ALL PRICES INCLUDE VAT



Walker Jackson & Co. Limited

CAR PARTS

Marlborough Road

Tel: Swindon 695702



Walker Jackson & Co. Limited

VAN AND TRUCK PARTS

Coped Hall, Wootton Bassett

Tel: Swindon 850225

A member of the  
Normand Group  
of Companies

PARTS CENTRE  
OPEN SIX DAYS A WEEK  
Monday to Friday  
8am - 6pm

Saturday 8.30am - 5pm  
PARTS CENTRE  
OPEN SIX DAYS A WEEK

Monday to Friday  
8.30am - 6.30pm  
Saturday 8.30am - 3.30pm



# THE ROBINS CORNER SHOP

## LEISUREWEAR AND SOUVENIR PRICES

| ARTICLE   | Price<br>£   | P&P<br>£ |      |
|---|--------------|----------|------|
| <b>AUTOGRAPH BOOKS</b>  | 1.50         | .25      |      |
| <b>BABYWEAR</b>   |              |          |      |
| Baby Bibs 'I Love Swindon Town'<br>White, Pink, Sky, Lemon                | .99          | .19      |      |
| Baby Grows<br>6-12 months, 12-18 months<br>White, Pink, Sky, Lemon        | 4.99         | .50      |      |
| <b>BADGES</b>   |              |          |      |
| Enamel Badges 'Crest'   | 2.00         | .20      |      |
| Enamel Badges (Small) 'Crest'   | 1.00         | .19      |      |
| Decal Badges  | .99          | .19      |      |
| Embroidered Badges 'Robins'   | .85          | .19      |      |
| Blazer Badges Embroidered 'Crest'   | 6.50         | .20      |      |
| Button Badges   | .25          | .19      |      |
| Badge Brooch  | .50          | .19      |      |
| <b>CAPS</b>   |              |          |      |
| Flat  | 3.00         | .50      |      |
| <b>CAR STICKERS</b>   |              |          |      |
| Crest (Square)  | 1.00         | .19      |      |
| <b>CLOCKS</b>   |              |          |      |
| Wall  | Batteries    | 9.50     | 1.10 |
| Table (Small)   | not included | 2.75     | .25  |
| <b>DESK TIDIES</b>  | 1.99         | .50      |      |
| *See other items with same design<br>10% Discount if you buy complete set |              |          |      |
| <b>ERASER</b>   | .35          | .19      |      |
| <b>FOOTBALLS LARGE</b>  | 10.00        | 1.50     |      |
| Mini  | 2.99         | .85      |      |
| <b>GIFT PACK</b>  | 2.99         | .50      |      |
| *See Desk Tidies  |              |          |      |
| <b>GLOVES MENS/YOUTHS</b>   | 2.50         | .35      |      |
| Boys  | 1.75         | .35      |      |
| <b>HATS SKI JACQUARD</b>  | 3.00         | .35      |      |
| Bob   | 2.85         | .35      |      |
| <b>SCARVES Acrylic</b>  | 2.85         | .50      |      |
| Jacquard  | 3.50         | .50      |      |
| Headsquares   | 5.50         | .50      |      |
| <b>SHIRTS</b>   |              |          |      |
| Polo/Leisure Embroidered Crest  | 10.50        | 1.00     |      |
| White, Red & Black S.M.L.XL   |              |          |      |
| Rugby 'Embroidered Crest'   | 15.50        | 1.20     |      |
| Red/White S.M.L.XL  |              |          |      |
| Rugby 'Embroidered Crest'   | 16.50        | 1.20     |      |
| Red, White & Black Stripe<br>S.M.L.XL                                     |              |          |      |
| Long Sleeved Cotton Training Tops   | 13.50        | 1.20     |      |
| Black, Red  |              |          |      |
| <b>SOAP TIDIES</b>  | .99          | .40      |      |
| *See Desk Tidies  |              |          |      |
| <b>SWEATERS</b>   |              |          |      |
| Acrylic 'Club Crest' V. Neck S.M.L.                                       | 13.75        | 1.50     |      |
| Red, Navy XL  | 14.50        | 1.50     |      |
| Acrylic Slipovers V. Neck   | 10.50        | 1.00     |      |
| Red, Navy S.M.L.XL  |              |          |      |
| <b>SPOONS 'Crested'</b>   | 1.50         | .30      |      |
| <b>SWEATSHIRTS</b>  |              |          |      |
| White/Navy 'Marco' One size   | 16.50        | 1.50     |      |
| Red/White 'Ziggy' S.M.L.XL  | 14.50        | 1.50     |      |
| Red/White 'Ziggy' Childrens   | 12.50        | 1.00     |      |
| 28-30 30-32   |              |          |      |
| <b>BOMBER JACKET Navy/Red</b>   | 17.50        | 1.50     |      |
| <b>ROCKY I Red/Black One size</b>   | 16.50        | 1.50     |      |
| <b>ROCKY II Red/White</b>   | 14.50        | 1.50     |      |
| (with Placket & Poppers)  |              |          |      |
| One size  |              |          |      |
| <b>RELAX Red/Black Collar</b>   | All Sizes    | 12.50    | 1.50 |
| Navy with Red Collar  | All Sizes    | 10.50    | 1.50 |
| Red/Black Stripe  | All Sizes    | 13.50    | 1.50 |
| <b>POLO NECK S/SHIRTS</b>   |              |          |      |
| Red/Black   | All Sizes    | 13.50    | 1.50 |

| ARTICLE                            | Price<br>£ | P&P<br>£ |
|------------------------------------|------------|----------|
| <b>JACKETS</b>                     |            |          |
| Body Warmers                       |            |          |
| 'Embroidered Crest'                |            |          |
| Grey, Black & Red S.M.L.XL         | 12.50      | 1.50     |
| <b>LONG Grey/Red</b>               | 26.50      | 1.50     |
| Bomber Jacket Black, Red           | 22.50      | 1.50     |
| <b>JOGGING PANTS (Flock Print)</b> |            |          |
| Grey & Navy                        | 11.50      | .85      |
| Junior Jog Suits 'Junior Robin'    | 10.50      | .75      |
| <b>KEY RINGS</b>                   |            |          |
| Key Fobs Leather (Metal Crest)     | 1.50       | .25      |
| Novelty Key Rings (Assorted)       | 1.00       | .25      |
| Leather Key Rings (Stamped Crest)  | .65        | .25      |
| <b>MUGS</b>                        |            |          |
| Figures 89/90                      | 1.85       | .75      |
| Standard White                     | 1.85       | .75      |
| <b>PENCILS with eraser</b>         |            |          |
| Red, Gold, Grey                    | .25        | .18      |
| <b>PENCIL CASES</b>                | 1.00       | .35      |
| <b>PENNANTS SATIN</b>              |            |          |
| Shield Large                       | 3.50       | .45      |
| Shield Small                       | 2.50       | .35      |
| Round Small                        | 2.50       | .35      |
| <b>PENS</b>                        |            |          |
| White with Crest                   | .35        | .18      |
| Red S.T.F.C.                       | .35        | .18      |
| Red/White S.T.F.C.                 | .35        | .18      |
| <b>PHOTOGRAPHS (Team)</b>          | 2.80       | .40      |
| (Individual)                       | 1.00       | .30      |
| <b>PROGRAMME BINDERS</b>           | 3.50       | 1.00     |
| <b>ROSETTES</b>                    | 1.20       | .30      |
| <b>RULER 'Swindon Town F.C.'</b>   | .75        | .30      |
| <b>T SHIRTS</b>                    |            |          |
| Crested T Shirt White, Red, Black  | 5.50       | .65      |
| S.M.L.XL                           |            |          |
| <b>ON VACATION</b>                 |            |          |
| White only S.M.L.XL                | 5.00       | .65      |
| <b>LADIES PORTUGUESE TOP</b>       |            |          |
| (Assorted Colours) S.M.L.          | 3.99       | .50      |
| <b>TEDDIES</b>                     |            |          |
| Car                                | 3.95       | .75      |
| <b>TIES</b>                        |            |          |
| Navy Diagonal Red & White Stripe   | 5.75       | .50      |
| Gray Diagonal Red & White Stripe   | 5.75       | .50      |
| (Swindon Town F.C. Embroidered)    |            |          |
| <b>TOOTHBRUSH HOLDERS</b>          | .99        | .35      |
| *See Desk Tidies                   |            |          |
| <b>TOWELS</b>                      |            |          |
| Bath Size 'Club Crest'             | 5.50       | 1.50     |
| <b>UNDERWEAR</b>                   |            |          |
| Ladies Briefs                      | 1.25       | .30      |
| Tvs Scored at the County Ground'   |            |          |
| Blue, Lemon, White, Aqua           |            |          |
| One Size                           |            |          |
| Ladies Red/Black Lace Panties      | 2.50       | .30      |
| One Size                           |            |          |
| Ladies Red/Black Lace Garters      | 1.50       | .20      |
| One Size                           |            |          |
| Ladies Red/Black Lace Suspenders   | 3.50       | .30      |
| One Size                           |            |          |
| (Full Set)                         | 6.99       | .50      |
| Boxer Shorts                       | 5.99       | .50      |
| 'Club Crest'                       |            |          |
| S.M.L.XL                           |            |          |
| Nightshirts                        | 5.50       | .50      |
| Tales of the County Ground'        |            |          |
| (Ex L Only)                        |            |          |
| <b>WHISTLES</b>                    | 1.00       | .30      |
| <b>WASTE BINS</b>                  | 5.99       | 1.00     |

All items can be obtained from the 'Robins Corner' shop and the North Stand Kiosk on all First XI Match Days. Also from the Commercial Department S.T.F.C. Monday to Friday during normal office hours, 9 am - 5 pm and First XI Match Days or ring Swindon 642984 ext. 30 or 31.



# 145 years of traditional ales.



*Ask for Arkell's. It's full of Wiltshire flavour.*

Kingsdown Brewery, Stratton St. Margaret, Swindon. Telephone: 0793 823026

## ARKELL

EST & SONS 1843



Talking to some of our fans recently, they asked me if I was surprised by Oldham's success this season.

Well, the answer to that was "no".

Most of the players, and certainly the gaffer, rate them as one of the best footballing sides in the Division.

I think they showed that, too, when they came to the County Ground on January 13.

We were delighted to come out of the game with a 3-2 win and the three points.

The next thing the fans asked was whether I thought Oldham's success was due in any way to their plastic pitch at Boundary Park.

The answer to that had to be "yes" . . . quite a bit, in fact.

If you look at their record closely, you will find they have not been beaten at Boundary Park for some 30-odd games.

This season they have won ten and drawn six League games - we were one of the six to get a point there - and they've beaten two First Division Clubs and drawn with another in the cups.

Arsenal and Southampton both went down there in the Littlewoods Cup and Everton managed to draw there in the F.A. Cup.

It's a heck of a record, but not matched by their away form . . . and it's their away form which I think shows how much advantage they have gained from the pitch.

In the Second Division table last week - and I had to write this column before last weekend's game could be taken into account - Oldham were in fourth place, one point behind us with a game in hand.

But if you had drawn up a table based only on away

form, they would have been below halfway. Only ten of the other 23 teams had worse records.

All this led us to the 64,000 dollar question, of course. Should they be allowed to play their League and Cup games on their artificial surface?

My answer to that had to be "no".

How can it be fair when one Club has a pitch surface so totally different to that of any other in the Division?

They play on it virtually every other game, while the

rest of the teams go there once a season.

To those of you who have never played on it at all, let me explain that it is very different from playing on grass.

The biggest difference is that you can't dig your studs in to stop or turn when you need to.

If you're running forward, for example, and need to pull up, you have to take three or four short steps and stutter to a stop.

Turning is even worse. You are almost helpless when the ball is played past either side of you.

For you know that if you try to turn or twist too quickly you're risking the chance of knee injuries and groin strains.

John Kelly, who left us to go to Oldham, could not stand it there.

He told me he was always having treatment for groin injuries and was very glad when he left to join Walsall.

Certainly you know when you've played there. Your legs feel as though you've been running about all day on concrete.

Having said that, if I were building a new Club I would certainly have an artificial pitch for training.

And I'd base it on Oldham's, which is the best one I've played on by far.

Besides being useful for training, it would also bring in quite a bit of revenue to the Club.

There would always be a great demand from local Clubs to use it. Oldham, I believe, rent theirs out nearly every day.

So, while I don't think synthetic surfaces should be allowed in the League or Cups, I do think it would be ideal for every Club to have one.

**Colin Calderwood**



ARTIFICIAL SURFACES



# **BETTER BUY BURMAH**

Burmah Petroleum Fuels Limited  
is proud to support Swindon  
Town Football Club and offers a  
warm welcome to all supporters  
at:

Swindon Autopoint  
Marlborough Road, Swindon

Newport Street Autopoint  
Newport Street  
Old Town, Swindon

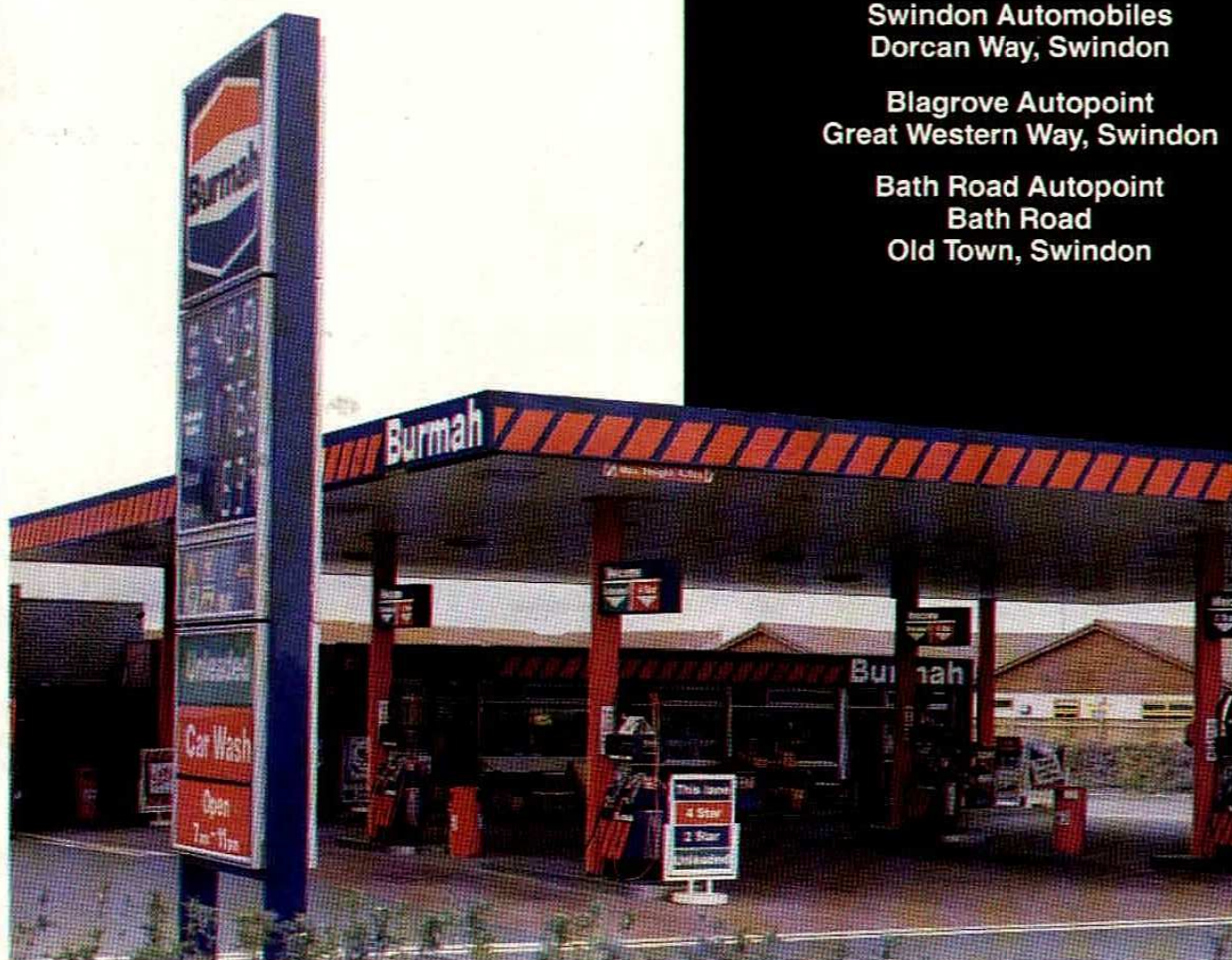
Stratton Autopoint  
67 Bridgend Road  
Stratton St Margaret, Swindon

St. Margarets Garage  
Highworth Road  
Stratton St. Margaret, Swindon

Swindon Automobiles  
Dorcan Way, Swindon

Blagrove Autopoint  
Great Western Way, Swindon

Bath Road Autopoint  
Bath Road  
Old Town, Swindon



The New Burmah Autopoint at Blagrove



*Look out for the Burmah  
Footballs kicked into the  
crowd at every home match!*





**THIS COLUMN  
NOW WRITTEN BY  
GRAHAM CARTER**

It hardly seems like five minutes since the opening day of the season and yet here we are with just six home games left after tonight... excluding play-offs.

On paper, we can be very optimistic about our run-in at home. The only problem is no game can really be considered 'easy' at this stage and tonight, for instance, we face a team who came within a few minutes of beating us back in September. Their late goal was against the run of play and it was perhaps only justice when Steve White got the equaliser.

I always feel that Steve is one of the unsung heroes of the team. He gets noticed when he's off-side and when he gets on the scoresheet (both of which are often!) but he always makes an important contribution. If I was a player, Chalkie would be the player I'd least like to play against. I'm sure visiting defences are glad to see the back of him whether he scores or not.

Steve White always makes a nuisance of himself on the field and let's hope he does that in some of our remaining away matches, which look tough. As well as the six-pointers at Blackburn and Newcastle, we face difficult trips to places like Bournemouth and Oxford where we can expect the usual titanic struggle. Worst of all is the match at Plymouth, our bogey ground. When we visit Home Park current form never has any bearing on the result.

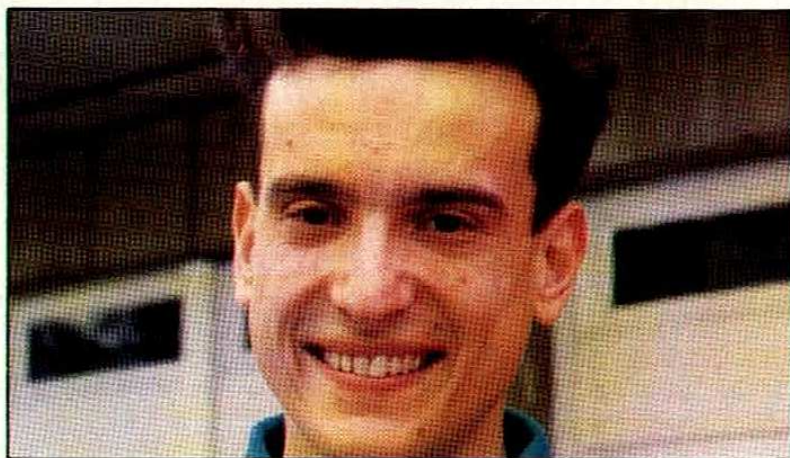
With any luck, by the time we visit Stoke for the last game of the season, the result will be academic. Stoke will almost certainly have been relegated by then and - who knows? - we might be promoted. Clinching automatic promotion would at

least spare us the possibility of facing Oldham in the play-offs and the indignity of playing on their 'carpet' again.

Any remaining supporters of the plastic must have seen the error of their ways in recent weeks. Though Oldham's away record continues to be poor, they are seemingly unbeatable at Boundary Park. Ourselves and Everton seem to have come closest this season. Tony Gubba enthused about how exciting the recent Oldham/Everton cup tie was, but it fell well short of

the man with the magic wellies and I reckon we'll have the best pitch in the First Division.

Talking of plastic pitches, isn't it nice to see Luton struggling again this year? Though they like to think they have realised a vision of the future of football, no other club in the League comes close to being quite as offensive as Luton. Not only is their pitch a joke, but their attitude towards away fans is, of course, a disgrace. As one of those who was allowed the dubious pleasure of visiting



by **Michael Scott**

my idea of a good match.

The so-called excitement at Oldham mostly stems from mistakes, with players constantly wrong-footed, struggling to keep their balance. About as exciting as watching a bunch of unicyclists if you ask me. Why not send out twenty two kangaroos? At least they might get somewhere near the first bounce.

Oldham must have been severely embarrassed by the quality of the County Ground pitch when they played here in January. Our groundsman really is

Kenilworth Road for our Simod Cup Semi-Final, I must say their relegation, if it comes, will bring me great pleasure. And it will be a good day for anyone who loves the game. Let's hope it brings a change of attitude in the Luton boardroom.

Finally, did you hear about the little boy at the centre of a custody battle? He told the social workers that he didn't want to live with his mum or his dad because they beat him. "I want to go to Manchester United", he said. "They don't beat anybody".

**SPORTS VIEWS**

*are the  
talk of  
the Town*



**GWR FM**

**ON 97.2 MHz  
CALL THE RADIO LINE FOR THE  
LATEST SPORTS NEWS 24 HOURS A DAY  
ON 0898 333000** Calls charged at 38p/min peak/25p/min all other times



★ ★

**TO ALL SUPPORTERS**

**IMPORTANT ANNOUNCEMENT  
OF TICKET ARRANGEMENTS**

**THE REMAINING SIX MATCHES AT THE COUNTY GROUND 1990**  
**ALL MATCHES WILL BE ALL TICKET IN ALL AREAS.**  
BY ORDER OF THE WILTSHIRE COUNTY COUNCIL SAFETY COMMITTEE

PLEASE WATCH YOUR **LOCAL PRESS**, LISTEN TO **GWR FM, BBC  
WILTSHIRE SOUND OR RING 0898 121640** FOR DETAILS OF WHEN  
TICKETS WILL BE ON SALE, ETC.

YOU WILL NEED A TICKET TO WATCH THE FOLLOWING MATCHES:

HULL CITY 17.3.90  
LEICESTER CITY 31.3.90  
BRIGHTON & HOVE ALBION 10.4.90  
WATFORD 14.4.90  
WEST BROMWICH ALBION 21.4.90  
MIDDLESBROUGH 28.4.90

★ ★

Application forms from: Swindon Town Reception Office or Galvin Sports,  
5 Meadow Walk, Standon, Ware, Herts SG11 1QT. Tel: (0920) 821818







**Shaun Close**  
 • Compton Welding  
 Purton, 770742  
 † V & G Newman  
 Lea, Malmesbury  
 • Tudor Carpets  
 Seymour Rd. Swindon  
 ▲ John Ward  
 New Farnley, Leeds  
 ■ Jefferies DIY  
 High St., Highworth



**SWINDON TOWN**



**Chic Bates**

Julian Wilson



**Nicky Summerbee**

Sir Seton  
 Wills  
 and family



**Alan McLoughlin**

• Jenco Industrial  
 Services  
 † John Harris  
 Westcott Place  
 • Post Office  
 Swindon  
 ▲ Martyn Smith  
 Market Stores  
 ■ Sandra Coburn



**Paul Bodin**

The Robins  
 Out of Town



**John Gittens**

Cliff Jones  
 Wessex  
 Aluminium



**Kevin Morris**

• Mrs Maslen  
 from Bristol  
 † 1 Graham, Southampton  
 Street, Swindon  
 • Mr. Maurice Earl  
 ▲ Geoff James  
 of Banbury  
 ■



**Colin Calderwood**

• Jenco Industrial  
 Services  
 † Don Rogers  
 • Mr T Barnes  
 Ashton Keynes  
 ▲ R K Owen, Friesian  
 Close, Swindon  
 ■ Sharon and Trevor  
 Chamberlain



**Nicky Hammond**

Allied  
 Dunbar



**Adrian Viveash**

• Raynor J R. and Son  
 Vehicle Dismantlers  
 Broadtown  
 Swindon  
 Tel: 863715  
 ■



**John Cornwell**



• T.S. Typesetting  
 Typesetters of the  
 official S.T.F.C.  
 matchday programme  
 Tel (0793) 618508  
 ■



**Dave Hockaday**

• Mr K. Chilcott  
 Ash Walk, Warminster  
 Rons Stores  
 † 196 Rodbourne Road  
 Swindon  
 • Wilts  
 Cannon Sports  
 Wootton Bassett  
 Colin Aldridge, The  
 Dormers, Highworth  
 ■



**Duncan Shearer**

Bassett  
 Bookmakers



**Fraser Digby**

• Mrs. Fisher, Birdcombe  
 Walk, Swindon  
 † Mrs. Chilcott, Ash  
 Walk, Warminster  
 • The Brown Family  
 of Carterton  
 Alexander Insurance  
 Services  
 ▲ S.T.F.C. Supporters  
 Skittles Team  
 ■ 'Top Cue' Stonehouse



**Tom Jones**

• Modular  
 Marquees  
 † (06667) 246  
 Mr Jonothan  
 Powell Esq.  
 ■



**Fitzroy Simpson**

The Austin  
 Rover Group



**Steve Foley**

• Jason and Duncan  
 Malcom, Bulford  
 † Graham Mulcahy  
 Wills Club, Swindon  
 • Mrs. Chilcott 34 Ash  
 Walk, Warminster  
 ▲ Jenco Industrial  
 Services  
 ■ 'Bring The Noise'



**David Kerslake**

• Bryant School of  
 Motoring, Tel. 823421  
 † Jenco Industrial  
 Services  
 • Mary Hewer Take  
 Away, Groundwell Rd.  
 ▲ Mr. Fisher, 50 Bird  
 Combe Walk, Swindon  
 ■ Miss N. Williams 50  
 Purley Ave., Swindon



**Steve White**

• Multisets  
 † For all  
 • computer  
 stationery  
 ■ (0793) 729500



**Tony Galvin**

Transplant  
 Ltd.  
 Swindon



**Ross McLaren**

• John Tremlin, Coped  
 Hall Service Station  
 † Terry Wollen, Wollens  
 Off Licence  
 • Mr. Paul Raeburne  
 JLR RCT, Colerne  
 ▲ Gerry Williams  
 The Ring Cafe  
 ■ Rebecca Vockins,  
 Priory Green



**Paul Hunt**

• In Focus  
 Wootton Under Edge  
 † Mr. and Mrs. Tucker  
 of Seend  
 • Roland Jones and Peggy  
 Postma, Ohegenham  
 ▲ Robert Yallop Swindon  
 ■ Sharon Weston  
 of Wroughton  
 Liana Hunt of Chisledon





## OUR HISTORIAN LOOKS BACK AT THE CAREER OF A SWINDON TOWN STAR OF A BYGONE ERA

In those days when Swindon were involved in the F.A. Cup semi-finals and Southern League championships, the name of Harold Fleming was always to the fore. But one of the 'unsung' heroes was the only Swindonian in the Town side of that era, Archie Bown. He was with the Club for more than ten years and went on to finish his career with Bristol City.

Archibald James William Bown was born in Regent Street in 1882. He played for Swindon Boys alongside Tommy Davies - whose brother Bert assisted the Town for many years - and on leaving school joined Even Swindon Albion.

### DEADLY SHOT

After a season he linked up with Swindon Casuals, playing in the Swindon and District and the Vale of White Horse Leagues. Archie soon gained a reputation for packing a deadly shot and the story goes that in a Cup game for the Casuals against Wantage he hit the ball with such force that it laid out the goalkeeper for ten minutes.

The Casuals went on to win both League and the 'Advertiser' Cup in his first season with them. The success did not last, however, as the Club disbanded soon afterwards. But Archie was then recruited by Swindon Town for their reserve side, playing in both the Western and Wiltshire Leagues.

Archie played for the Town as an amateur being also employed by the Great Western Railway as a fitter and turner. He made just one appearance in the first team at that time, against Brentford in February 1904.

### HONOURS IN DORSET

During that summer Archie moved from the railway factory at Swindon to Whiteheads Torpedo Works at Wyke Regis, near Weymouth. The Works Football Club played in the Dorset Senior League. They provided a number of players for the Dorset county side - and Archie soon joined the list. During his two years at Whiteheads, he was selected for every Dorset County fixture. The Club was also drawn against Swindon in the Third Qualifying Round of the F.A. Cup, but their Southern League opponents provided all the ammunition, hitting seven goals without reply.

In 1906, the Torpedo Works reduced its number of employees and Archie found himself displaced. So he came back to Swindon and rejoined the GWR works. The Town took him back into their reserve eleven and it was against

Salisbury in October 1907 that Archie first teamed up with the legendary Fleming.

### WITH THE PROFESSIONALS

Harold played on the left-wing that day, with Archie his inside partner. Both scored twice in a 4-0 win and Fleming gained immediate promotion to the first team. Archie followed him into the professional ranks a month later.

His first outing as a professional was at Bradford Park Avenue, a somewhat curious location for a Southern League engagement! Archie's partner then was not Harold, but Freddy Fenton - who had arrived at Swindon from Bristol City in the previous May. The Town forced a

### TO SOUTH AMERICA

The Town then went on a South American tour, to Uruguay and Argentina. They remained unbeaten in eight games and in five of them Senor Bown scored twice. He arrived back in England with a tally of eleven goals.

Archie went on to become top scorer at Swindon in all of the next three seasons before the Great War intervened. In his penultimate appearance at the County Ground, he blasted all six goals in a 6-0 win over Watford. After the War, at the age of 37, Archie assisted Bristol City for three seasons, making his final League appearance at Rotherham in February 1922. He then returned to Weymouth, where he died in 1958.

## Passing Back



## Paul Plowman

2-2 draw, with Archie getting both goals. By the end of 1907/08, Archie had scored nine times in sixteen League appearances.

In Swindon's first Southern League title win, in 1910/11, Archie missed just four games and contributed 15 goals. A year later he was ever-present and was top goalscorer with 23. He also appeared in all six games as the Town reached the F.A. Cup semi-final replay stage. Sadly for Archie, he was persuaded to take a penalty in that game because regular dead-ball expert Billy Tout was absent through injury. Archie struck the spot-kick well, but Barnsley keeper Cooper saved it and Swindon were denied a place in the Final.



● Archie Bown





**SWINDON**  
TOWN

**CLUBCALL**

PHONE NOW

**0898 12 16 40**

# **SWINDON TOWN CLUBCALL**

# **0898 12 16 40**

**All the news from The County Ground**

■ Reports 24 hours **EVERY** day. ■ Phone now for exclusive news and interviews from the club. ■ Match reports from home and away games as they happen.

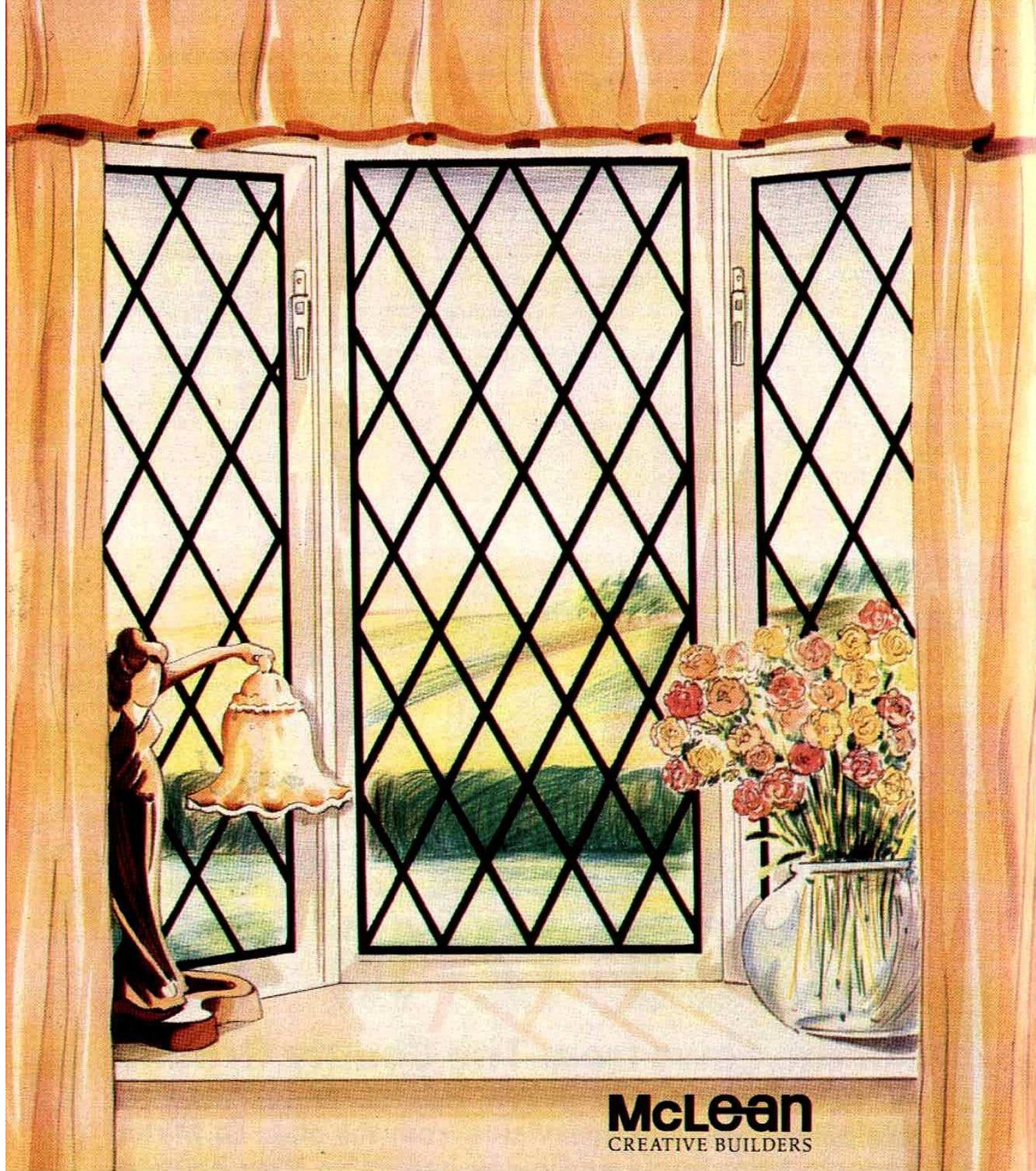
■ All the inside stories plus much much more.

|                             |               |
|-----------------------------|---------------|
| CLUBCALL INDEX _____        | 0898 12 11 92 |
| SHOOT SOCCER NEWS _____     | 0898 12 11 95 |
| ENGLAND CLUBCALL _____      | 0898 12 11 96 |
| SUPERCALL SPORT INDEX _____ | 0898 12 11 10 |

Calls are charged at 38p/min peak, 25p/min off peak inc. VAT ①







**McLean**  
CREATIVE BUILDERS

**Admit it, you're beginning  
to feel at home already.**



**1. Your 1-2-3 forecast for the Second Division (not including Swindon Town).**

1. Leeds United
2. Sheffield United
3. Oldham Athletic

**2. The team you expect to make the most improvement.**

West Bromwich Albion.

**3. A tip for promotion from Division Three**

Bristol City.

**4. Select a team from players that you have played with at Club level.**

1. Fraser Digby
2. David Hockaday
3. Paul Bodin
4. Alan McLoughlin
5. Colin Calderwood
6. Jon Gittens
7. Tommy Jones

8. Steve White
9. Duncan Shearer
10. Ross Maclaren
11. Steve Foley

**5. The best player you have seen in your position.**

Bruno Conti.

**6. Details of your first match, at any level, for your first professional Club.**

**Team and Opponents:**  
Swindon Town v Watford

**Date of Match:**

7 April 1988

**Venue:**

Vicarage Road

**Position played:**

Right Midfield

**Number of goals scored:**

None

**Final result:**

2-1 to Swindon

**7. Your favourite holiday spots at home and abroad.**

Birmingham.

Paris.

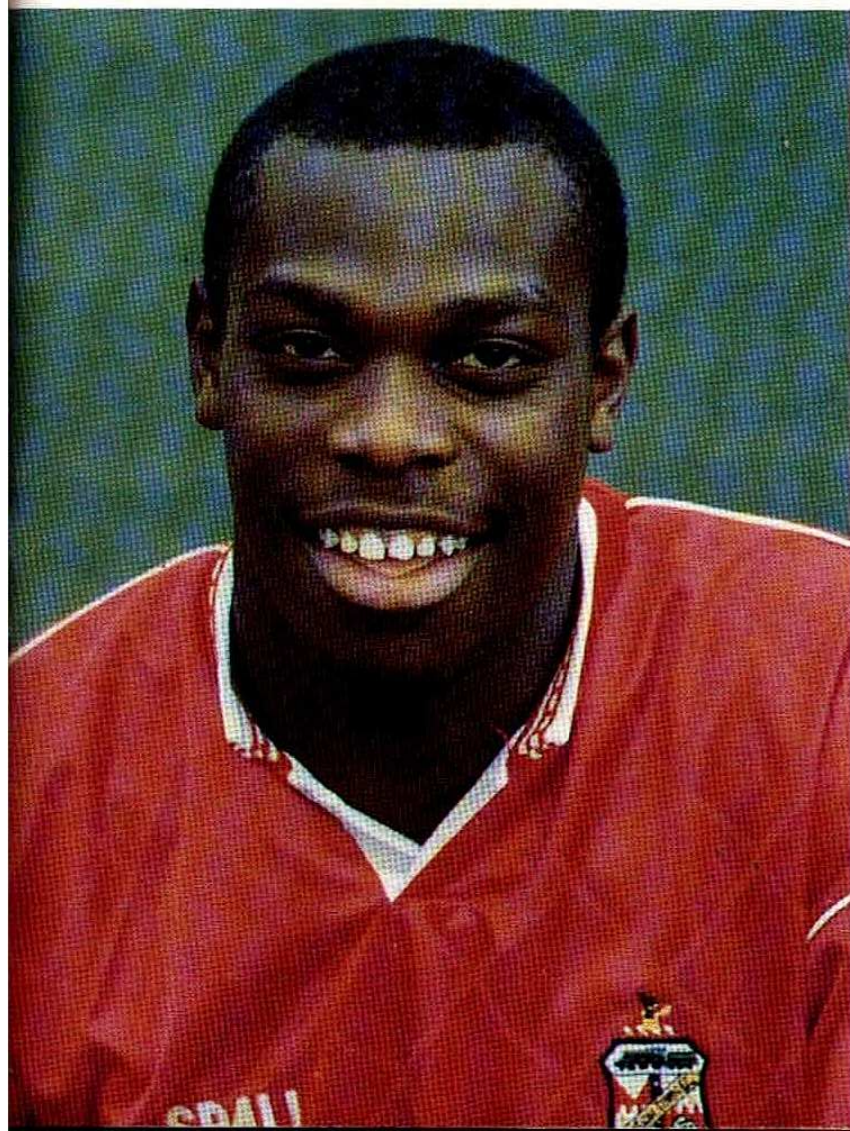
**8. Your favourite sports commentators.**

Desmond Lynam.

**9. Your favourite publication for sport.**

Match.

## Neil Tomlinson



**10. The best & worst dressers among your team mates.**

Best - Alan McLoughlin

Worst - Steve Foley.

**11. The best ground you have played on and the one you would most like to appear on.**

Villa Park

Wembley

**12. Your worst moment on the football field.**

None in particular.

**13. What are your favourite TV shows.**

Coronation Street

Brookside.



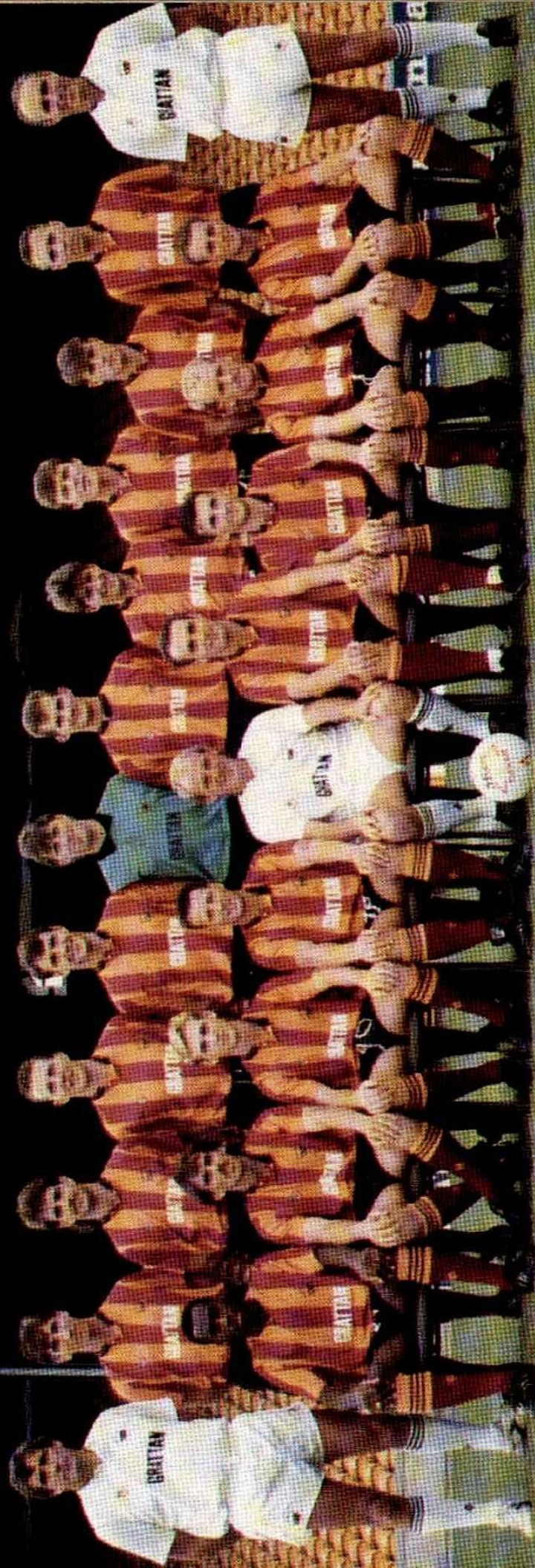




Steve White scores against West Ham United, only to find his effort ruled out.







**BRADFORD CITY FOOTBALL CLUB 1989-1990**

**Back Row (left to right):** Norman Hunter (Coach), Brian Mitchell, Dave Evans, Peter Jackson, Gavin Oliver, Paul Tomlinson, Lee Sinnott, Leigh Palin, Mark Leonard, Paul Jewell, Brian Tinnion, Bryan Edwards (Physio).

**Front Row (left to right):** Gary Chapman, Alan Davies, Lee Duxbury, Greg Abbott, Terry Yorath (Manager), Jimmy Quinn, Karl Goddard, Mark Evans, David Campbell.



# Form guide

## BRADFORD CITY FORM GUIDE 1989/90 (LAST 10 GAMES) (not including last Saturday)

| Date   | Opponents            | Home | Away | Goalscorers      | Att.   |
|--------|----------------------|------|------|------------------|--------|
| Dec 30 | West Bromwich Albion | W2-0 |      | Sinnott, Tinnion | 8,560  |
| Jan 1  | Blackburn Rovers     |      | D2-2 | Jewell, Tinnion  | 9,957  |
| 7      | Charlton Athletic    | FAC  | D1-1 | Tinnion          | 5,537  |
| 10     | Charlton Athletic    | FAC  | L0-3 |                  | 8,424  |
| 13     | Wolverhampton W      |      | D1-1 | Leonard          | 10,680 |
| 20     | Portsmouth           |      | L0-3 |                  | 8,801  |
| Feb 3  | Barnsley             | D0-0 |      |                  | 9,923  |
| 10     | Leicester City       |      | D1-1 | Adcock           | 10,281 |
| 17     | Oxford United        | L1-2 |      | Leonard          | 7,389  |
| 24     | AFC Bournemouth      |      | L0-1 |                  | 8,206  |

### SUMMARY OF GOALSCORERS

Quinn 7 (to West Ham United), Leonard 7, Tinnion 5, Jewell 5, Campbell 3, Adcock 3, Sinnott 2, Abbott 2, Mitchell 2, Davies 1, Aizlewood 1, Jackson 1, Megson 1.

|                                       |         |
|---------------------------------------|---------|
| AGGREGATE home gates (including Cup): | 148,871 |
| Home League gates:                    | 134,716 |
| Away gates (including Cup):           | 188,415 |
| Away League gates:                    | 170,671 |
| AVERAGE Home gates (including Cup):   | 8,257   |
| Home League gates:                    | 8,961   |
| Away gates (including Cup):           | 9,918   |
| Away League gates:                    | 10,666  |

# Welcome to BRADFORD CITY

**MARK EVANS (Goalkeeper).** Born Bradford. Joined Bradford as a YTS apprentice and became full time last season. He had made a number of first team appearances and shows excellent promise.

**PAUL TOMLINSON (Goalkeeper).** Born Brierley Hill. Joined us in the close season of 1987 from Sheffield United for £47,500. Played for Birmingham City on loan from Sheffield. Regular in First Team squad since joining City.

**GREG ABBOTT (Defender).** Joined Bradford City in August 1982 after being released by Coventry City but did not gain a regular First Team place until the following season. Has now played in more than 200 League games for the Club.

**DAVE EVANS (Defender).** Born West Bromwich. Joined City from neighbours Halifax Town in the close season of 1984 and missed only one match in the Cham-

pionship season for Division Three. Began his League career with Aston Villa but made only two appearances in their First Team and then moved to Halifax Town for a fee of £25,000. Played almost 250 senior games at the Shay before moving to Bradford on a free transfer.

**KARL GODDARD (Defender).** Born Leeds. Joined City on free transfer from Manchester United during the summer of 1985 after being an apprentice with that Club. Now a regular in the First Team squad.

**BRIAN MITCHELL (Defender).** Born Stonehaven, Scotland. Cost £70,000 from Aberdeen in February 1987. Made over 100 appearances for Aberdeen and has had experience of European football.

**LEE SINNOTT (Defender).** Born Aldridge. Signed in the close season of 1987 from Watford F.C. for £137,000. Previously with Walsall. A First Team regular since joining City.

**GALVIN OLIVER (Defender).** Born Felling. Joined City from Sheffield Wednesday for £30,000 in 1985/86 season. Had been with Wednesday since school-boy days. A First Team regular since joining us.

**TONY ADCOCK (Forward).** Born Bethnal Green. Signed from Northampton Town in September 1989. Started his soccer career as an apprentice with Colchester United.

**MARK ELLIS (Forward).** Born Bradford. Local born player who played as an amateur for three seasons before turning professional. A regular now for six years who can play on either flank but plays mainly on the left.

**MARK AIZLEWOOD (Centre Midfield).** Born St Helens, Merseyside. Signed for Bradford City in the autumn of 1986 for £40,000 from Stockport County. He scored 23 goals for Stockport in his last season with them. Previously played for Crewe, Tranmere Rovers and started his career at Everton.

**DAVID CAMPBELL (Midfield or Front Runner).** Started his football career with Oxford Boys Club, Northern Ireland. He has since played with Nottingham Forest and joined City in March 1989 from Charlton Athletic. Northern Ireland International.

**PAUL JEWELL (Forward).** Born Liverpool. The third of City's Summer '88 signings from Wigan Athletic for £80,000. Began his career as an apprentice with Liverpool and then moved to Wigan Athletic 4 seasons ago.

**PETER JACKSON (Defender).** Born Bradford and played for City ever since apprentice days. Has spent two seasons with Newcastle United but returned to Valley Parade in September 1988.

**PETER COSTELLO (Forward).** Born Halifax and was signed as an Associate Schoolboy for Bradford. He was then taken on as a 2 year YTS apprentice, after completing the 2 years he became a full-time professional in the summer of '88.

**BRIAN TINNIION (Left Back).** Born Newcastle. Went to Newcastle as an apprentice and joined Bradford City in March 1989 for £150,000.

**ALAN DAVIES (Midfield).** Born Manchester. Played with Manchester United as an apprentice, has played for Newcastle United and Swansea City and signed for Bradford in June 1989.

**GARY CHAPMAN (Front Runner).** Joined Bradford from a local team, Ossett Town, in September 1988.

**IAN MCCALL (Left Side Midfield).** Born Dumfries. Previous Clubs are Dunfermline Athletic and Glasgow Rangers. Signed for Bradford City in January 1990.

TEAM NEWS





# AKERS GARAGE LTD.

**MAIN VAUXHALL/OPEL BEDFORD DEALERS**

VAUXHALL - OPEL - BEDFORD - VAUXHALL - OPEL

VAUXHALL - OPEL - BEDFORD - VAUXHALL - OPEL

CAR/VAN SALES NEW & USED

Service Department M.O.T. Testing Station

BODY & PAINT REPAIR SHOP

Genuine Vauxhall / Opel / Bedford Spares

SELECTION QUALITY USED VEHICLES

## AKERS

**YOUR LOCAL VAUXHALL/OPEL/BEDFORD SPECIALIST**

THE STREET, MOREDON, SWINDON SN2 3ES

**Tel: (0793) 23457-8-9**



SERVICE - PARTS - SALES - SERVICE - PARTS - SALES - SERVICE - PARTS - SALES - SERVICE

## De Luxe Car Hire



- \* OVER 100 CARS TO CHOOSE FROM INCL. AUTOMATICS.
- \* SPORTS AND PRESTIGE CARS AVAILABLE.
- \* NO MILEAGE CHARGE.
- \* DELIVERY & COLLECTION SERVICE.
- \* CHILD SEATS, ROOF RACKS & TOW BARS AVAILABLE.
- \* OPEN 7 DAYS 9am - 6pm.



11 MARLBOROUGH ROAD

**SWINDON 644996** (DAYTIME)

**SWINDON 31205** (EVENINGS)





At the time of writing, this column is up to date with games and goals in the Second Division, so there's a chance to focus on the wild and wacky world of the wireless once again.

GWRFM is on the air 24 hours a day from our studios in Wootton Bassett. My role is to present the breakfast show Monday to Friday 6-9. That means getting up at 4.00 a.m. to arrive at work shortly after five to prepare for the programme. Much of the preparation is done the day before by journalists in the newsroom preparing stories for broadcast. Obviously, waking somebody up early on for a quote wouldn't go down very well. The news is then constantly updated every twenty minutes and reported alongside the three-day-weather check, a unique service.

'Jambusters' is only on GWRFM, your chance to provide information for our travel and traffic bulletins by calling Swindon 848586.

There are the day's birthdays and anniversaries at 8.15 where you could hear your name on the radio by writing to GWRFM, PO Box 2000, Swindon SN4 7EX.

The station always offers more chances to win including the sticker spotter at a quarter to each hour. If we spot your sticker and read out the car registration number, you can claim a petrol prize by ringing in. The

Golden Groove competition at 8.50 tests your lyrical knowledge. When we stop a song, chosen from the 60s, 70s or 80s, we ask for the next two lines to win a cash jackpot. There's always more music in the morning, hits old and new played off compact disc for real stereo quality. The 'day job' starts at nine o'clock! We keep in

day-to-day contact with the County Ground for the latest news of Swindon Town Football Club and record interviews where appropriate. Short extracts are to be heard in the week, while the full-length versions are played in our weekend sports programmes.

There's a full 'scene-setter' at Friday tea times 5.00 p.m. - 6.00 p.m. Then the 'live' action starts on Saturday at 2.00 p.m. There are previews, regular reports and after-match reaction crammed into the new four hours, with more of your favourite music.

There are several specials. We've recently conducted a 'facts before the fans' phone-in to Chairman Brian Hillier and Manager Ossie Ardiles as well as live radio broadcasts on the Leeds United and West Ham United matches. I think I've just about managed to keep up with the play - commentating makes you appreciate the value of the action replay.

A regular supporter this season has been our afternoon show presenter Gary Vincent, who's yet to see the side lose - lucky omen! He'll be on the radio tomorrow with the Hitline Top Ten - the West's most up-to-date chart. You can call 0898 884490 anytime to vote for your current favourite song and then hear it on GWRFM between 3.30 and 4.00 p.m.

Stay tuned.

★ ★ ★ ★ ★ ★ ★ ★ ★ ★  
★ **GWR FM** ★ ★ ★ ★ ★ ★ ★ ★ ★ ★  
★ **97.2 MHz** ★ ★ ★ ★ ★ ★ ★ ★ ★ ★

*Shaun  
Hodgetts*  
of GWR



**G  
A  
M  
E  
S  
&  
G  
O  
A  
L  
S**

*in the  
Second  
Division*





# MIKE KNIGHT TYRES

**SWINDONS No. 1 TYRE MAN  
FOR THE BEST DEAL IN TOWN  
PLEASE TRY MY TEAM FIRST**

MAIN DEALERS FOR DUNLOP, GOODYEAR,  
PIRELLI, MICHELIN - PLUS COLWAY REMOULDS



**BATTERY HOT LINE** PLEASE RING TEL NO:

**GEOFF PAGE SWIN 36023**

Hundreds of 2 Year Guaranteed Batteries · Always in Stock · Ready to Fit All Cars

**WESTCOTT PLACE**  
TEL: SWINDON 27380 TYRES  
BATTERY HOT LINE: 36023  
THIS DEPT TYRES & BATTERIES

TARMAC ACQUIRED  
OUR RODBOURNE DEPOT  
FOR REDEVELOPMENT

**SHRIVENHAM ROAD**  
TEL: SWINDON 20629 TYRES  
TEL: SWINDON 52574 EXHAUSTS  
THIS DEPOT TYRES, BATTERIES, EXHAUSTS

# BAMPTONS



STRATTON ROAD,  
SWINDON,  
WILTSHIRE.

TEL: (0793) 35547/8/9

## MOTOR VEHICLE ACCIDENT REPAIR SPECIALISTS

*Approved by Major Insurance Companies*



Motor  
Agents Association

APPROVED

**PORSCHE**  
BODY REPAIRER





**JUNIOR  
ROBINS**

#### **JUNIOR TRAVEL CLUB**

Next proposed away trips

**Oxford United**

Saturday 24th March 1990

**A.F.C. Bournemouth**

Saturday 7th April 1990

PLEASE SUPPORT THESE TRIPS

\*\*\*

#### **NEXT PROPOSED HOME FIXTURE**

Saturday 14th April

v The Junior Hornets of Watford

Hopefully, weather permitting, we aim to play a series of six-a-sides on the pitch prior to the afternoons match.

\*\*\*

#### **REPORT OF OUR AWAY FIXTURE WITH THE JUNIOR BLUES OF POMPEY**

(Saturday 24th February 1990)

A full coach left the County Ground at 8.15 a.m. The journey down un-

eventful except getting lost finding the practice ground, further disappointment losing heavily to the Junior Blues Under-13s in the morning session.

A very enjoyable lunch of sausage, beans and chips was readily provided by Dave and Ken, Youth Leaders of the Blues.

The Under-10s made up for the mornings defeat by beating the young Blues at six-a-side which, as always, is played on the Fratton Park pitch prior to kick-off.

These type of activities are always enjoyed by both sets of supporters in the run-up to 3.00 p.m.

A very enjoyable day out by all.

**Junior Robin Traveller**

### **Face in the Crowd**

Are you the face ringed in the photograph alongside? If you are, you've won two tickets for a S.T.F.C. home game this season. All you have to do is bring along your programme to Lisa, Joanne or Michelle at the Club reception office and claim your tickets.

You can do this between 9.30 am and 5.00 pm Monday to Friday or between 9 am and 12 noon on Saturday first team home match days.



### **WARNING TV SURVEILLANCE**

*This ground is equipped with*

### **CLOSED CIRCUIT TELEVISION**

Installed with the help of a grant from the Football Trust. It is there to increase crowd safety and to help the police. Recording facilities enable film and photographs to be taken of disorder, which may subsequently be used in a court of law.

The Football Trust is funded entirely by the pools companies Littlewoods, Vernons and Zetters from their Spotting-the-Ball competition.

### **SPALL SPORTSWEAR LIMITED**

**Official Suppliers to Swindon Town  
F.C. and Many Other Leading League  
Clubs**

**DO CALL AND SEE DOUG WOODMAN AND  
VIEW THE LARGE RANGE OF FOOTBALL  
AND OTHER SPORTS GOODS AVAILABLE  
FROM THE OFFICIAL CLUB SHOP.**  
OPEN 9.00 to 12.00 2.00 to 5.00 DAILY



**JUNIOR ROBINS**



## Travel Club News



The new committee of S.T.F.C. Travel Club held their first meeting recently. The following Officers were appointed:

1. Mr. Mick Lewis - Chairman
2. Mrs. Janet Smith - Vice Chairman & Club Liaison Officer
3. Mr. Vincent Jupe - Treasurer
4. Mrs. Sheila Large & Mrs. Tracey Hartley - Joint Secretaries
5. Mr. Colin Aldridge - Lotteries etc.
6. Mr. Andrew Clinch - Steward

If you are not already a member, why not join and travel to away matches in comfort. The Travel Club runs coaches to all Swindon Town away matches. The official Travel Club also gets priority where away matches are all ticket. We

also intend to take coaches to some England matches at Wembley, our first trip being to England v Brazil on March 25th.

The Travel Club is open on Matchdays and on Tuesday, Wednesday and Thursday evenings from 7.30 - 10.00 p.m. Telephone bookings can also be made on these evenings.

So come and join us and support your team on the **Official Travel Club**

Membership forms available at Travel Club Office. The future of the bookshop is under discussion with the Football Club. All programmes from away matches etc. will be available at Robins Corner Shop.

Looking forward to seeing you all.

**Janet Smith**

We will be visiting **Plymouth Argyle** on **Saturday 10th March**. Your route will start via the **M4 west bound** then continuing along the **M5 south bound** until the end. From there proceed along the **A38 Plymouth by-pass** to **Tavistock Road A386**. Branch left to Plymouth **A386** then turn right then left into **Outland Road A3041** for **Home Park**.

### MATCH DETAILS

**Seats** for the Town fans are available in the **Mayflower Stand** priced **£5.50 adults, £4.50 children and senior citizens**.

For those supporters wishing to **stand** the **Barn Park terrace** is available, ticket price is **£3.50, no concessions**. Entrance for the Town supporters will be via the **Barn Park turnstiles**, and **main entrance**.

Parking is available in the free car park adjoining the ground (2,000 spaces).

The nearest **railway station** is **Plymouth station**

# with the CLUB

which is about 1 mile away. Telephone number **(0752) 21300**.

The nearest **police station** is **Devonport Station**, 1½ miles away.

Your matchday programme will cost **80p**.

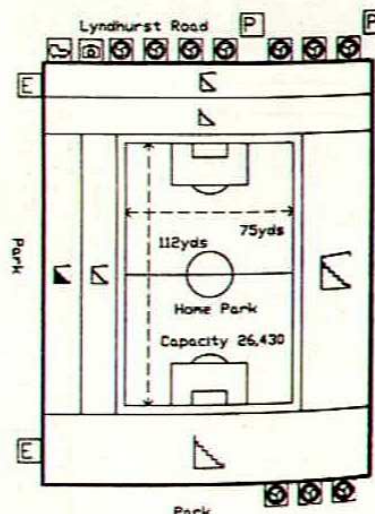
More information concerning Plymouth Argyle can be

obtained by telephoning **(0752) 562561**.

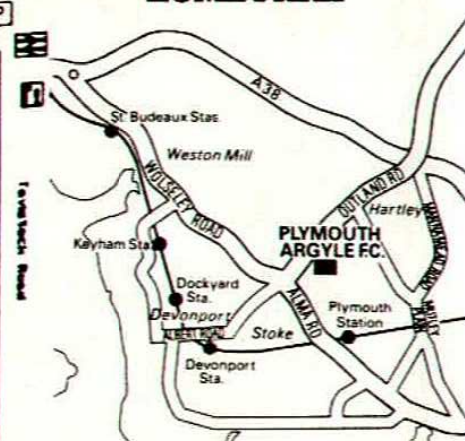
### PLYMOUTH ARGYLE HONOURS

Champions Division Three (South) 1929-30, 1951-52. Champions Division Three 1958-59.

### PLAN OF HOME PARK



### STREETS SURROUNDING HOME PARK



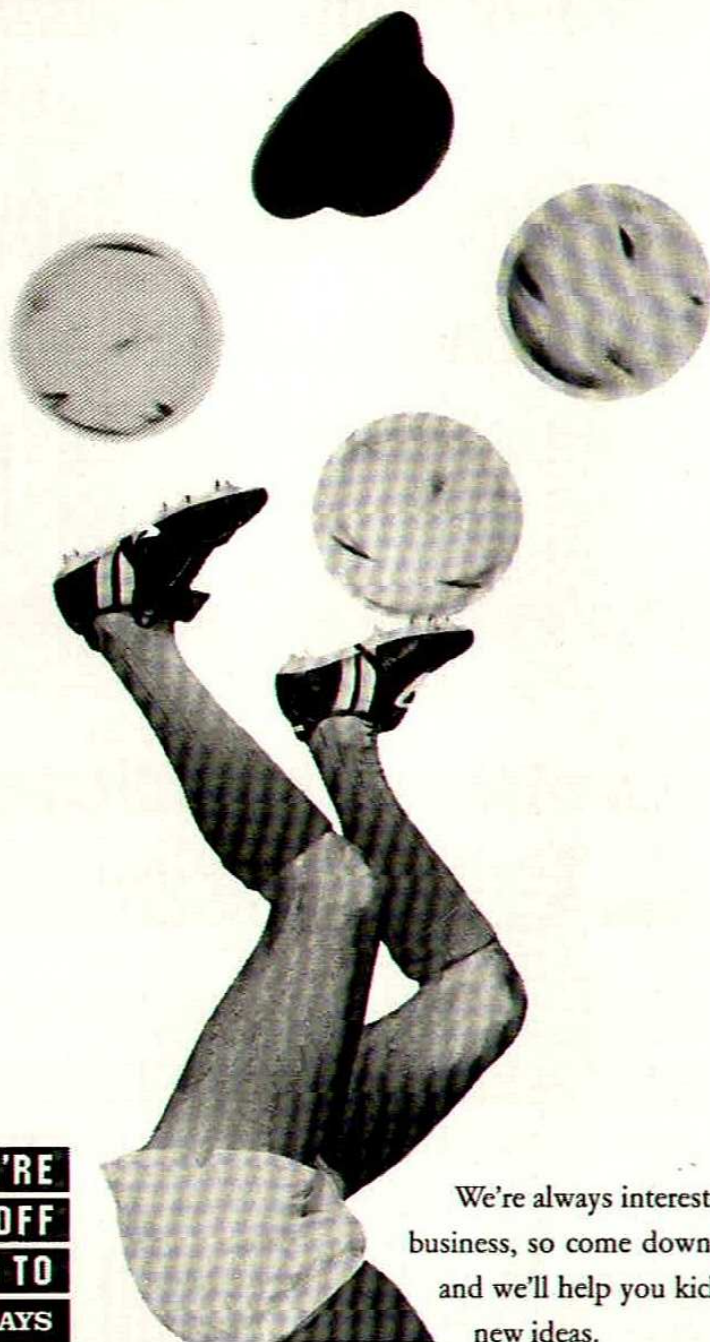
## FIRST FOR SPORT ON 97.2 MHz

50125 PLANNES





WHATEVER YOUR BUSINESS,  
WE'LL HELP  
GET THE BALL ROLLING.



... YOU'RE  
BETTER OFF  
TALKING TO



BARCLAYS

MEMBER OF IMRO

We're always interested in new  
business, so come down to see us  
and we'll help you kick off your  
new ideas.



# BARCLAYS LEAGUE FIXTURES DIVISION TWO 1989/90



| Sat | Aug. 19  | Sunderland                   | 0-2 | 10,199 | Digby | Hockaday | King | McLoughlin | Parkin | Calderwood | Galvin | Shearer | White | Maclaren | Simpson | Ardiles | Cornwell |
|-----|----------|------------------------------|-----|--------|-------|----------|------|------------|--------|------------|--------|---------|-------|----------|---------|---------|----------|
| Sat | Aug. 26  | Oldham Athletic              | 2-2 | 5,531  | Digby | Barnard  | King | McLoughlin | Parkin | Calderwood | Galvin | Shearer | White | Maclaren | Simpson | Ardiles | Cornwell |
| Sun | Sept. 3  | Wolverhampton Wanderers      | 1-1 | 21,413 | Digby | Barnard  | King | McLoughlin | Parkin | Calderwood | Galvin | Shearer | White | Maclaren | Simpson | Ardiles | Cornwell |
| Sat | Sept. 9  | West Ham United              | 0-2 | 13,920 | Digby | Barnard  | King | McLoughlin | Parkin | Calderwood | Galvin | Shearer | White | Maclaren | Simpson | Ardiles | Cornwell |
| Tue | Sept. 12 | Sheffield United             | 0-0 | 6,540  | Digby | Barnard  | King | McLoughlin | Parkin | Calderwood | Galvin | Shearer | White | Maclaren | Simpson | Ardiles | Cornwell |
| Sat | Sept. 16 | Barnsley                     | 3-0 | 5,518  | Digby | Hockaday | King | McLoughlin | Parkin | Calderwood | Galvin | Shearer | White | Maclaren | Simpson | Ardiles | Cornwell |
| Tue | Sept. 19 | Shrewsbury (LC R1)           | 0-4 | 21,894 | Digby | Hockaday | King | McLoughlin | Parkin | Calderwood | Galvin | Shearer | White | Maclaren | Simpson | Ardiles | Cornwell |
| Sat | Sept. 23 | Leeds United                 | 0-0 | 6,862  | Digby | Hockaday | King | McLoughlin | Parkin | Calderwood | Galvin | Shearer | White | Maclaren | Simpson | Ardiles | Cornwell |
| Tue | Sept. 26 | Plymouth Argyle 7.45         | 1-1 | 8,334  | Digby | Hockaday | King | McLoughlin | Parkin | Calderwood | Galvin | Shearer | White | Maclaren | Simpson | Ardiles | Cornwell |
| Sat | Sept. 30 | Bradford City                | 3-1 | 5,561  | Digby | Hockaday | King | McLoughlin | Parkin | Calderwood | Galvin | Shearer | White | Maclaren | Simpson | Ardiles | Cornwell |
| Tue | Oct. 3   | Shrewsbury (LC R1) 7.45      | 3-2 | 5,366  | Digby | Hockaday | King | McLoughlin | Parkin | Calderwood | Galvin | Shearer | White | Maclaren | Simpson | Ardiles | Cornwell |
| Sat | Oct. 7   | Hull City                    | 3-0 | 8,939  | Digby | Hockaday | King | McLoughlin | Parkin | Calderwood | Galvin | Shearer | White | Maclaren | Simpson | Ardiles | Cornwell |
| Tue | Oct. 10  | Ipswich Town                 | 3-0 | 10,715 | Digby | Hockaday | King | McLoughlin | Parkin | Calderwood | Galvin | Shearer | White | Maclaren | Simpson | Ardiles | Cornwell |
| Sat | Oct. 14  | Oxford United 7.45           | 1-2 | 8,547  | Digby | Hockaday | King | McLoughlin | Parkin | Calderwood | Galvin | Shearer | White | Maclaren | Simpson | Ardiles | Cornwell |
| Tue | Oct. 17  | Leicester City               | 3-3 | 8,318  | Digby | Hockaday | King | McLoughlin | Parkin | Calderwood | Galvin | Shearer | White | Maclaren | Simpson | Ardiles | Cornwell |
| Sat | Oct. 21  | Bolton Wers (LC R3) 7.45     | 2-1 | 8,070  | Digby | Hockaday | King | McLoughlin | Parkin | Calderwood | Galvin | Shearer | White | Maclaren | Simpson | Ardiles | Cornwell |
| Tue | Oct. 24  | Bolton Wers (LC R3) 7.45     | 6-0 | 7,825  | Digby | Hockaday | King | McLoughlin | Parkin | Calderwood | Galvin | Shearer | White | Maclaren | Simpson | Ardiles | Cornwell |
| Wed | Nov. 1   | Brighton & Hove Albion       | 1-1 | 11,533 | Digby | Hockaday | King | McLoughlin | Parkin | Calderwood | Galvin | Shearer | White | Maclaren | Simpson | Ardiles | Cornwell |
| Sat | Nov. 4   | Stoke City                   | 2-0 | 13,720 | Digby | Hockaday | King | McLoughlin | Parkin | Calderwood | Galvin | Shearer | White | Maclaren | Simpson | Ardiles | Cornwell |
| Tue | Nov. 7   | Bolton Wers (LC R3) 7.45     | 1-1 | 14,129 | Digby | Hockaday | King | McLoughlin | Parkin | Calderwood | Galvin | Shearer | White | Maclaren | Simpson | Ardiles | Cornwell |
| Sat | Nov. 11  | Middlesbrough                | 0-2 | 7,393  | Digby | Hockaday | King | McLoughlin | Parkin | Calderwood | Galvin | Shearer | White | Maclaren | Simpson | Ardiles | Cornwell |
| Tue | Nov. 14  | Bolton Wers (LC R3) 7.45     | 2-2 | 10,438 | Digby | Hockaday | King | McLoughlin | Parkin | Calderwood | Galvin | Shearer | White | Maclaren | Simpson | Ardiles | Cornwell |
| Sat | Nov. 18  | Port Vale (F.A. Cup 1)       | 2-0 | 11,827 | Digby | Hockaday | King | McLoughlin | Parkin | Calderwood | Galvin | Shearer | White | Maclaren | Simpson | Ardiles | Cornwell |
| Tue | Nov. 21  | Bolton Wers (LC R3) 7.45     | 0-2 | 10,282 | Digby | Hockaday | King | McLoughlin | Parkin | Calderwood | Galvin | Shearer | White | Maclaren | Simpson | Ardiles | Cornwell |
| Sun | Nov. 26  | Portsmouth 3pm               | 2-1 | 9,223  | Digby | Hockaday | King | McLoughlin | Parkin | Calderwood | Galvin | Shearer | White | Maclaren | Simpson | Ardiles | Cornwell |
| Wed | Nov. 29  | Southampton (LC R4) 7.45     | 0-0 | 15,865 | Digby | Hockaday | King | McLoughlin | Parkin | Calderwood | Galvin | Shearer | White | Maclaren | Simpson | Ardiles | Cornwell |
| Sat | Dec. 2   | Sunderland                   | 2-3 | 7,326  | Digby | Hockaday | King | McLoughlin | Parkin | Calderwood | Galvin | Shearer | White | Maclaren | Simpson | Ardiles | Cornwell |
| Tue | Dec. 5   | A.F.C. Bournemouth           | 0-2 | 10,282 | Digby | Hockaday | King | McLoughlin | Parkin | Calderwood | Galvin | Shearer | White | Maclaren | Simpson | Ardiles | Cornwell |
| Sun | Dec. 10  | Sheffield Utd (FA Cup 2) 3pm | 2-1 | 3,223  | Digby | Hockaday | King | McLoughlin | Parkin | Calderwood | Galvin | Shearer | White | Maclaren | Simpson | Ardiles | Cornwell |
| Wed | Dec. 13  | Millwall (ZDSC) 7.45         | 2-1 | 9,884  | Digby | Hockaday | King | McLoughlin | Parkin | Calderwood | Galvin | Shearer | White | Maclaren | Simpson | Ardiles | Cornwell |
| Sun | Dec. 17  | West Bromwich Albion         | 4-3 | 8,426  | Digby | Hockaday | King | McLoughlin | Parkin | Calderwood | Galvin | Shearer | White | Maclaren | Simpson | Ardiles | Cornwell |
| Tue | Dec. 20  | Blackburn Rovers 3pm         | 1-1 | 11,827 | Digby | Hockaday | King | McLoughlin | Parkin | Calderwood | Galvin | Shearer | White | Maclaren | Simpson | Ardiles | Cornwell |
| Sat | Dec. 30  | Newcastle United             | 2-0 | 13,708 | Digby | Hockaday | King | McLoughlin | Parkin | Calderwood | Galvin | Shearer | White | Maclaren | Simpson | Ardiles | Cornwell |
| Mon | Jan. 1   | Watford                      | 1-2 | 17,488 | Digby | Hockaday | King | McLoughlin | Parkin | Calderwood | Galvin | Shearer | White | Maclaren | Simpson | Ardiles | Cornwell |
| Sat | Jan. 6   | Bristol City (F.A. Cup 3)    | 3-2 | 7,742  | Digby | Hockaday | King | McLoughlin | Parkin | Calderwood | Galvin | Shearer | White | Maclaren | Simpson | Ardiles | Cornwell |
| Sat | Jan. 13  | Oldham Athletic              | 2-4 | 19,014 | Digby | Hockaday | King | McLoughlin | Parkin | Calderwood | Galvin | Shearer | White | Maclaren | Simpson | Ardiles | Cornwell |
| Tue | Jan. 16  | Southampton (LC R4 Replay)   | 1-2 | 17,410 | Digby | Hockaday | King | McLoughlin | Parkin | Calderwood | Galvin | Shearer | White | Maclaren | Simpson | Ardiles | Cornwell |
| Sat | Jan. 20  | Wolverhampton Wanderers      | 4-1 | 5,314  | Digby | Hockaday | King | McLoughlin | Parkin | Calderwood | Galvin | Shearer | White | Maclaren | Simpson | Ardiles | Cornwell |
| Wed | Jan. 24  | Norwich City (ZDSC 7.45)     | 3-2 | 16,209 | Digby | Hockaday | King | McLoughlin | Parkin | Calderwood | Galvin | Shearer | White | Maclaren | Simpson | Ardiles | Cornwell |
| Sun | Feb. 4   | Leeds United                 | 1-0 | 7,179  | Digby | Hockaday | King | McLoughlin | Parkin | Calderwood | Galvin | Shearer | White | Maclaren | Simpson | Ardiles | Cornwell |
| Sat | Feb. 10  | Barnsley                     | 0-1 | 6,024  | Digby | Hockaday | King | McLoughlin | Parkin | Calderwood | Galvin | Shearer | White | Maclaren | Simpson | Ardiles | Cornwell |
| Tue | Feb. 13  | Crystal Palace (ZDSC)        | 2-2 | 16,105 | Digby | Hockaday | King | McLoughlin | Parkin | Calderwood | Galvin | Shearer | White | Maclaren | Simpson | Ardiles | Cornwell |
| Sat | Feb. 18  | West Ham Utd                 | 1-1 | 10,300 | Digby | Hockaday | King | McLoughlin | Parkin | Calderwood | Galvin | Shearer | White | Maclaren | Simpson | Ardiles | Cornwell |
| Sat | Feb. 24  | Portsmouth                   | 3-0 | 8,314  | Digby | Hockaday | King | McLoughlin | Parkin | Calderwood | Galvin | Shearer | White | Maclaren | Simpson | Ardiles | Cornwell |
| Sat | Mar. 3   | Port Vale                    |     |        |       |          |      |            |        |            |        |         |       |          |         |         |          |
| Tue | Mar. 6   | Bradford City 7.45           |     |        |       |          |      |            |        |            |        |         |       |          |         |         |          |
| Sat | Mar. 10  | Plymouth Argyle              |     |        |       |          |      |            |        |            |        |         |       |          |         |         |          |
| Sat | Mar. 17  | Hull City                    |     |        |       |          |      |            |        |            |        |         |       |          |         |         |          |
| Tue | Mar. 20  | Ipswich Town                 |     |        |       |          |      |            |        |            |        |         |       |          |         |         |          |
| Sat | Mar. 24  | Oxford United                |     |        |       |          |      |            |        |            |        |         |       |          |         |         |          |
| Sat | Mar. 31  | Leicester City               |     |        |       |          |      |            |        |            |        |         |       |          |         |         |          |
| Tue | Apr. 3   | A.F.C. Bournemouth           |     |        |       |          |      |            |        |            |        |         |       |          |         |         |          |
| Sat | Apr. 10  | Brighton & Hove Albion 7.45  |     |        |       |          |      |            |        |            |        |         |       |          |         |         |          |
| Tue | Apr. 14  | Watford                      |     |        |       |          |      |            |        |            |        |         |       |          |         |         |          |
| Mon | Apr. 16  | Blackburn Rovers             |     |        |       |          |      |            |        |            |        |         |       |          |         |         |          |
| Sat | Apr. 21  | West Bromwich Albion         |     |        |       |          |      |            |        |            |        |         |       |          |         |         |          |
| Wed | Apr. 25  | Newcastle United             |     |        |       |          |      |            |        |            |        |         |       |          |         |         |          |
| Sat | Apr. 28  | Middlesbrough                |     |        |       |          |      |            |        |            |        |         |       |          |         |         |          |
| Sat | May 5    | Stoke City                   |     |        |       |          |      |            |        |            |        |         |       |          |         |         |          |

Key: ● Goalscorer \* and † Player substituted and ( ) number of player substituted Home matches in bold type

## NEXT MATCH AT THE COUNTY GROUND SATURDAY 17th MARCH 1990 SWINDON TOWN v HULL CITY BARCLAYS LEAGUE DIVISION TWO

### SECOND DIVISION LEAGUE TABLE

|                          | P         | W        | D        | L         | F         | A         | W        | D        | L         | F         | A         | Pts       |
|--------------------------|-----------|----------|----------|-----------|-----------|-----------|----------|----------|-----------|-----------|-----------|-----------|
| Leeds United             | 32        | 12       | 4        | 0         | 33        | 12        | 5        | 5        | 6         | 23        | 25        | 60        |
| Sheffield United         | 31        | 9        | 5        | 2         | 26        | 17        | 7        | 6        | 2         | 23        | 15        | 59        |
| <b>Swindon Town</b>      | <b>32</b> | <b>9</b> | <b>4</b> | <b>3</b>  | <b>38</b> | <b>20</b> | <b>6</b> | <b>5</b> | <b>5</b>  | <b>21</b> | <b>23</b> | <b>54</b> |
| Oldham Athletic          | 31        | 10       | 6        | 0         | 32        | 16        | 3        | 6        | 6         | 15        | 20        | 51        |
| Newcastle United         | 31        | 10       | 3        | 2         | 35        | 22        | 3        | 8        | 5         | 22        | 18        | 50        |
| Wolverhampton Wanderers  | 32        | 8        | 4        | 4         | 26        | 16        | 5        | 6        | 5         | 24        | 25        | 49        |
| Sunderland               | 32        | 8        | 6        | 2         | 29        | 19        | 4        | 6        | 6         | 20        | 29        | 48        |
| Blackburn Rovers         | 32        | 5        | 7        | 4         | 32        | 27        | 6        | 7        | 3         | 24        | 21        | 47        |
| Port Vale                | 32        | 8        | 7        | 1         | 26        | 12        | 3        | 4        | 9         | 17        | 26        | 44        |
| West Ham United          | 31        | 8        | 4        | 4         | 28        | 17        | 3        | 6        | 6         | 17        | 21        | 43        |
| Oxford United            | 31        | 7        | 5        | 4         | 27        | 19        | 5        | 2        | 8         | 16        | 22        | 43        |
| Ipswich Town             | 30        | 7        | 7        | 1         | 27        | 16        | 4        | 3        | 8         | 17        | 30        | 43        |
| A.F.C. Bournemouth       | 32        | 8        | 4        | 4         | 26        | 22        | 3        | 5        | 8         | 21        | 29        | 42        |
| Leicester City           | 32        | 7        | 5        | 4         | 21        | 19        | 4        | 4        | 8         | 23        | 31        | 42        |
| Watford                  | 31        | 8        | 2        | 5         | 25        | 17        | 2        | 7        | 7         | 13        | 21        | 39        |
| Portsmouth               | 32        | 3        | 8        | 5         | 25        | 25        | 5        | 5        | 6         | 16        | 21        | 37        |
| West Bromwich Albion     | 32        | 4        | 6        | 6         | 28        | 27        | 4        | 6        | 6         | 21        | 24        | 36        |
| Brighton and Hove Albion | 32        | 7        | 4        | 4         | 17        | 14        | 3        | 2        | 11        | 21        | 32        | 36        |
| Plymouth Argyle          | 30        | 6        | 5        | 4         | 23        | 16        | 3        | 2        | 10        | 18        | 29        | 34        |
| Hull City                | 31        | 3        | 5        | 7         | 14        | 22        | 4        | 8        | 4         | 3         | 23        | 34        |
| Middlesbrough            | 32        | 7        | 3        | 5         | 22        | 17        | 2        | 4        | 11        | 15        | 30        | 34        |
| <b>Bradford City</b>     | <b>32</b> | <b>6</b> | <b>5</b> | <b>11</b> | <b>17</b> | <b>0</b>  | <b>7</b> | <b>9</b> | <b>14</b> | <b>31</b> | <b>30</b> |           |
| Barnsley                 | 31        | 4        | 6        | 6         | 16        | 19        | 3        | 3        | 9         | 15        | 37        | 30        |
| Stoke City               | 32        | 4        | 7        | 5         | 18        | 19        | 1        | 5        | 10        | 8         | 30        | 27        |

### The TRANSPLANT GOALSCORING LEAGUE 1990

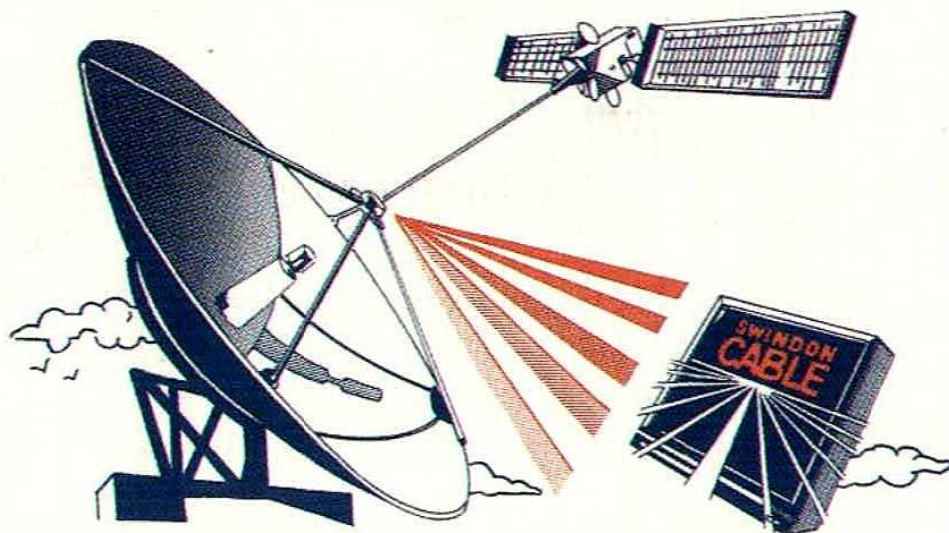
|                 |    |
|-----------------|----|
| Duncan Shearer  | 20 |
| Steve White     | 19 |
| Alan McLoughlin | 16 |

**Match Sponsor:**  
The Holiday Inn  
Pipers Way, Swindon

**Match Ball Sponsor:**  
The Holiday Inn  
Pipers Way, Swindon

| Match Sponsor  | Team                    | Matchball Sponsor  |
|--|-------------------------|--|
| Wheeler Ltd. Swindon   | Sunderland              | Mr. Mortimore, Tooting   |
| McLean Homes South West Ltd.   | Wolverhampton Wanderers | Windmill Hill Garage, Swindon                                    |
| Mr. C. Puffett, Multi Agg Quarries Ltd.                                  | Barnsley                | Mr. D. Marchant  |
| Blunsdon House Hotel   | Plymouth Argyle         | Blunsdon House Hotel   |
| Allied Dunbar Ltd.   | Shrewsbury Town         | Central South Television   |
| Swindon Color Gas Centre   | Ipswich Town            | Baker Bros. Builders, Lambourn                                   |
| The Plumb Centre, Swindon  | Oxford United           | <b>ROVER GROUP</b>   |
| Oxford and Swindon Co-Op. Society  | Blackburn Rovers        | Caine Town F.C.  |
| Walker Jackson & Co. Ltd. Main Dealers for Ford Cars & Iveco Ford Trucks | Bolton Wanderers        | Mr. Raynor, Uni Mill Engineering                                 |
| Mr. C. A. Sharples Esq.  | A.F.C. Bournemouth      | Wilson Tool International Ltd.                                   |
| Arkells Brewery  | Stoke City              | Data Call Systems Ltd. of Bristol                                |
| Sr Seton Wills and Friends   | Portsmouth              | Mr. Piper and Friends, Swiss Chalet                              |
| Skurrys, Drove Road, Swindon   | Southampton             | Cliff Jones, Wessex Aluminium                                    |
| Haywood Insurance Brokers, Melksham                                      | Millwall                | A.E. Smith & Son, Funeral Directors, Queens Drive, Swindon       |
| Crosby Doors   | Millwall                | Data Call Systems Limited, 78/86 Pennywell Road, Bristol BS5 0TR |
| Brunei Scaffolding, James Watt Close, Hawksworth Ind. Est., Swindon      | Blackburn Rovers        | Mr. Tremlin, Coped Hall Service Station                          |
| <b>ROVER GROUP</b>   | Newcastle United        | Hayman and Partners, Swindon                                     |
| Swindon Garage Doors   | Oldham Athletic         | Jenco Industries Ltd.  |
| McLean Homes South West Limited  | Norwich City            | South Marston Country Club                                       |
| Action Plant Limited   | Leeds United            | Cliff Jones, Wessex Conservatories                               |
| Transplant Ltd.  | West Ham United         | Our Friends from the Disabled Enc.                               |
| Roy Allen Supplies, Swindon  | Port Vale               | South Marston Country Club                                       |
| The Holiday Inn, Swindon   | Bradford City           | The Holiday Inn, Swindon   |
| Burmah Petroleum Fuels Ltd.  | Hull City               | Flow Forms (Wiltshire) Ltd.                                      |
| F. Green and Sons, Lambourn  | Leicester City          | The Pete Allen Traditional Jazz Band                             |
| Metalite Engineering Ltd. Swindon  | Brighton & Hove Albion  | Kissocasion M/F Kissograms 870806                                |
| Clarion Stoji (UK) Ltd.  | Watford                 | Hammond Construction, Highworth                                  |
| M & S Group Wholesale News and Books                                     | West Bromwich Albion    | <b>ROVER GROUP</b>   |
| Texaco Ltd. Swindon  | Middlesbrough           | Emery McLaren Orr  |





International coverage of all the major sporting favourites including;  
 Athletics, Golf, Rugby, Wrestling, Gymnastics, Skating, Motor  
 Racing and of course Football, together with live action from the  
 new and exciting world of Speed Sailing, Windsurfing, Baseball,  
 Body Building and Yachting.

*plus a great deal more from*

**Swindon Cable – Your Local Cable & Satellite Television Company**  
**Telephone: 0800 717121**

## THE FAMILY GAME

More and more clubs are providing modern facilities to enable families to watch and enjoy our national game in safety and comfort.

Family stands and enclosures are a common feature of League grounds and form part of a major programme to improve football stadia throughout the United Kingdom. This season will see

further projects including new and better toilet facilities, especially for female fans, the provision of seating in existing covered areas and improved accommodation for supporters with disabilities.

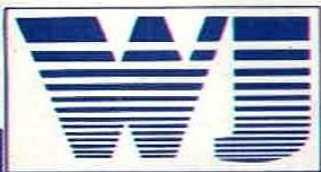
The Football Grounds Improvement Trust is responsible for all these measures. Each year it receives half of the £9.5 million donated by Littlewoods, Vernons and Zetters from their Spotting-the-Ball competition and spends it on schemes to improve standards at League grounds in Britain.





# WALKER JACKSON

**Motoring...  
we're on the  
ball!**



A Member of the Normand Group of Companies

*We're with you all the way!*

Car Sales  
Fleming Way  
Roundabout  
Tel: Swindon 20002

Car Service & Parts  
Marlborough Road  
Tel: Swindon 20002

Commercial Sales Service Parts  
Coped Hall, Wootton Bassett  
Tel: Swindon 853344



## TRANSPLANT CONSTRUCTION MACHINERY RENTAL

Reading Depot:  
Transplant Limited,  
Toutley Works, Toutley Road,  
Wokingham, Berkshire RG11 5QN  
Tel: Reading (0734) 786278  
Fax: (0734) 792820

South Coast Depot:  
Unit 10, Fort Fareham Ind. Est.,  
Newgate Lane, Fareham,  
Hampshire PO14 1AH  
Tel: Fareham (0329) 822453  
Fax: (0329) 822502

**NEW  
SOUTH COAST  
DEPOT**



**POWERED AERIAL ACCESS EQUIPMENT**

These items may be hired from any of our depots, but for specialist advice contact our Manager

## THE FORCE IN PLANT HIRE



Head Office and Accounts Telephone: Swindon (0793) 731741



Bristol Depot:  
Transplant Limited,  
Emery Road, Brislington Trd. Est.,  
Bristol BS4 5PF Tel: (0272) 779211  
Fax: (0272) 711559

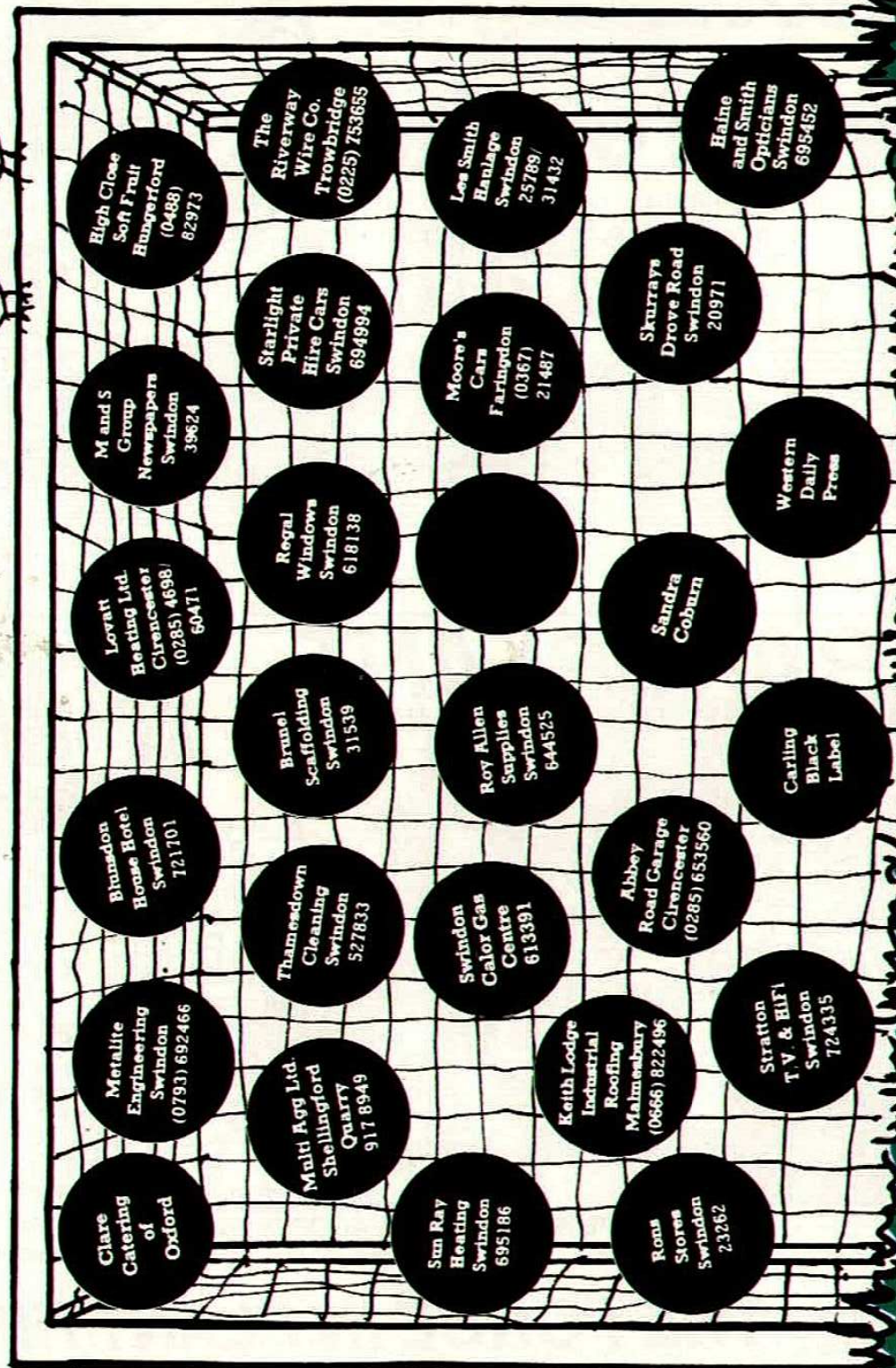
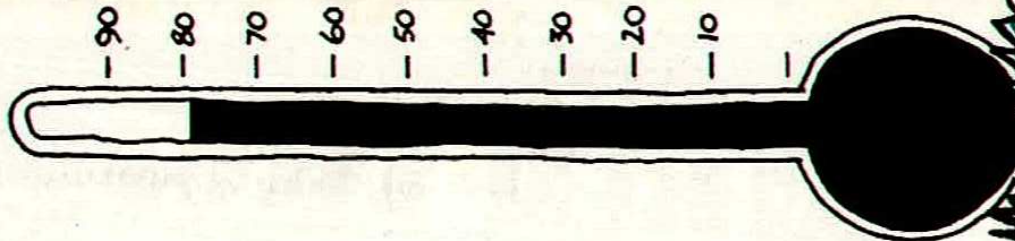
Swindon Depot:  
Gipsy Lane,  
Swindon  
Tel: (0793) 542266  
Fax: (0793) 731600

**BULK EXCAVATIONS**  
Six and Eight Wheel  
Hinos. Hire on Daywork  
or Priced Basis.





# GOALCOMETER



Swindon Town F.C. would like to thank the following sponsors who have sponsored the first team for every goal scored in competitive matches during season 1989/90



# THE UNBEATABLE TEAM DEACONS



PLUS

ROLEX

SALES  
& SERVICE



# DEACONS

(Established 1848)

11-13 WOOD STREET, SWINDON

Tel: 22072 and 27530

23 MARKET PLACE, TETBURY Tel: 52766



VISA

# Hulford

**Motors Ltd**

SELF DRIVE HIRE SPECIALISTS  
FOR OVER 30 YEARS

CAR &  
VAN HIRE

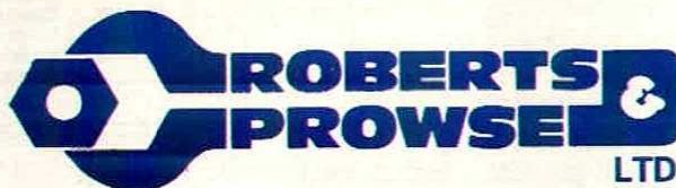


SPECIAL LOW LONG WEEKEND RATES



SHRIVENHAM ROAD, SWINDON

534934 & 524839



SPECIALISTS IN  
LTD.

*Process Pipework and Plant, Building Mechanical Services,  
Industrial Fabrication, Sheet Metalwork, Combustion Services, Thermal Insulation,  
Asbestos Removal, Engineering Merchants, Development Engineers*

THORNHILL, SOUTH MARSTON, SWINDON SN3 4TA.

TELEPHONE (0793) 825505 FACSIMILE (0793) 822642



# CASTLE'S

Office and Bakery

4 and 5 MARKET STREET SWINDON

Telephone 522017

Specialists

Wedding Cakes, Birthday Cakes.

Try our Wholemeal Bread and

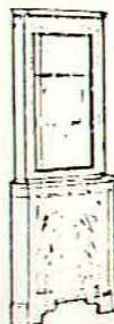
Wiltshire Lardies and

Delicious Dairy Cream Cakes

# ELEGANT

# Reproduction Furniture

# Luxury . . . you can afford



Qualities to suit all tastes . . .

Prices to suit all pockets . . .

Come and see for yourself at . . .

*Howell's*

Reproduction Furniture & French Polishing Specialists  
52, DEVIZES ROAD, OLD TOWN



Swindon. Tel: 35658







## 'OVENDEN PAPERS' FOOTBALL COMBINATION LEAGUE TABLE (up to and including Saturday 24th February 1990)

|                        | P         | W         | D        | L         | F         | A         | Pts       |
|------------------------|-----------|-----------|----------|-----------|-----------|-----------|-----------|
| Tottenham Hotspur      | 28        | 20        | 2        | 6         | 73        | 34        | 62        |
| Millwall               | 31        | 18        | 8        | 5         | 49        | 27        | 62        |
| Arsenal                | 26        | 17        | 4        | 5         | 60        | 41        | 56        |
| Norwich City           | 27        | 16        | 4        | 7         | 54        | 28        | 52        |
| Chelsea                | 25        | 14        | 5        | 6         | 55        | 32        | 47        |
| Oxford United          | 28        | 12        | 6        | 10        | 51        | 41        | 42        |
| Brighton & Hove Albion | 27        | 11        | 5        | 11        | 40        | 46        | 38        |
| <b>Swindon Town</b>    | <b>29</b> | <b>12</b> | <b>2</b> | <b>15</b> | <b>45</b> | <b>53</b> | <b>38</b> |
| West Ham United        | 26        | 10        | 6        | 10        | 53        | 48        | 36        |
| Ipswich Town           | 26        | 10        | 4        | 12        | 44        | 46        | 34        |
| Luton Town             | 25        | 9         | 6        | 10        | 46        | 40        | 33        |
| Portsmouth             | 24        | 6         | 11       | 7         | 24        | 34        | 29        |
| Crystal Palace         | 23        | 7         | 6        | 10        | 33        | 31        | 27        |
| Queens Park Rangers    | 24        | 8         | 3        | 13        | 40        | 58        | 27        |
| Charlton Athletic      | 24        | 7         | 4        | 13        | 36        | 46        | 25        |
| Watford                | 24        | 5         | 8        | 11        | 39        | 52        | 23        |
| Reading                | 26        | 6         | 5        | 15        | 40        | 71        | 23        |
| Southampton            | 26        | 3         | 8        | 15        | 24        | 45        | 17        |
| Fulham                 | 26        | 4         | 3        | 19        | 17        | 63        | 15        |

## RESERVES v ARSENAL

Result: Lost 3-2

In comparison to the previous game against Oxford, we really set our stall out and got back to playing our flowing football of the previous two or three weeks.

We started off very sharp and never let Arsenal get into any form of rhythm. Chasing and harrying the opposition into mistakes we always managed to regain possession quickly, thus it was no surprise when we took the lead, Shaun Close turning sharply to score with an angled shot from Mark Jones' pass. We increased our lead after thirty minutes when Fitzroy Simpson scored at the far post after good work by Paul Hunt down the right wing. It was shortly after that when our problems began, conceding two bizarre goals in the space of five minutes. The first occurred when 'keeper Thompson misjudged a corner kick and the ball hit defender Ady Viveash to roll into the empty net, and the second when Thompson hit

a short goal kick straight to Niall Quinn whose shot was only parried to the waiting Ampady for Arsenal's equaliser.

# Andy Rowland



Andy Rowland's kit is sponsored by:  
 Shirt: Mrs. C. Weavers, Haydon Wick  
 Boots: R. K. Owen, Freisian Close  
 Track Suit: Mrs. B. Hillier, Calne  
 Training Kit: Roy Warren & Family, Lambourn  
 Shorts/Socks: Chris Piper and Martin Bailey,  
 Swiss Chalet, Gorse Hill

## 'OVENDEN PAPERS' FOOTBALL COMBINATION 1989/90

| Date |        | Opponents              | Result     |
|------|--------|------------------------|------------|
| 1989 |        |                        |            |
| Wed  | Aug 23 | Portsmouth             | 2.00 H 2-0 |
| Sat  | 26     | Southampton            | 3.00 A 1-0 |
| Tue  | 29     | West Ham United        | 2.00 H 3-1 |
| Sat  | Sep 2  | Wimbledon              | 3.00 A 2-3 |
| Tue  | 5      | Oxford United          | 2.00 H 0-4 |
| Wed  | 13     | Fulham                 | 2.00 H 5-0 |
| Wed  | 20     | Ipswich Town           | 3.00 A 0-3 |
| Wed  | 27     | Chelsea                | 2.00 A 0-6 |
| Mon  | Oct 2  | Millwall               | 2.00 H 3-1 |
| Tue  | 10     | Queens Park Rangers    | 2.00 H 1-2 |
| Wed  | 18     | Crystal Palace         | 2.00 A 1-2 |
| Mon  | 23     | Millwall               | 2.00 A 0-3 |
| Tue  | 31     | Luton Town             | 2.00 H 2-0 |
| Tue  | Nov 7  | Wimbledon              | 1.30 H 2-0 |
| Tue  | 14     | Queens Park Rangers    | 2.00 A 4-2 |
| Thu  | 23     | Arsenal                | 1.30 H 0-1 |
| Tue  | 28     | Charlton Athletic      | 2.00 A 1-2 |
| Tue  | Dec 5  | Brighton & Hove Albion | 1.30 H 2-0 |
| Sat  | 9      | West Ham United        | 2.00 A 1-5 |
| Tue  | 12     | Portsmouth             | 7.00 A 0-0 |
| Tue  | 19     | Crystal Palace         | 1.30 H 2-3 |
| 1989 |        |                        |            |
| Tue  | Jan 9  | Watford                | 1.30 H 1-1 |
| Tue  | 16     | Reading                | 1.30 H 2-4 |
| Wed  | 24     | Brighton & Hove Albion | 7.15 A 2-0 |
| Sat  | 27     | Watford                | 3.00 A 1-1 |
| Tue  | 30     | Chelsea                | 1.30 H -   |
| Fri  | Feb 2  | Norwich City           | 7.30 A 3-2 |
| Tue  | 6      | Tottenham Hotspur      | 1.30 H 1-0 |
| Wed  | 14     | Oxford United          | 7.30 A 3-0 |
| Sat  | 17     | Arsenal                | 3.00 A 3-2 |
| Tue  | 20     | Southampton            | 1.30 H 2-3 |
| Wed  | 28     | Fulham                 | 2.00 A     |
| Sat  | Mar 10 | Luton Town             | 2.00 A     |
| Tue  | 13     | Ipswich Town           | 1.30 H     |
| Tue  | 20     | Charlton Athletic      | 1.30 H     |
| Wed  | 28     | Reading                | 2.00 A     |
| Tue  | Apr 3  | Norwich City           | 1.30 H     |
| Tue  | 24     | Tottenham Hotspur      | 2.00 A     |

These two blows badly affected confidence and our second half form suffered accordingly although we were always in contention, it never seemed as though we would add to our total.

Arsenal scored their winner with twenty minutes remaining, Donnelly just getting to the ball first to poke it past Thompson to leave us very disappointed after an enterprising first half hour.



● Shaun Close – scored our opening goal against Arsenal



# SOUTH EAST COUNTIES

## v BRENTFORD

(away)

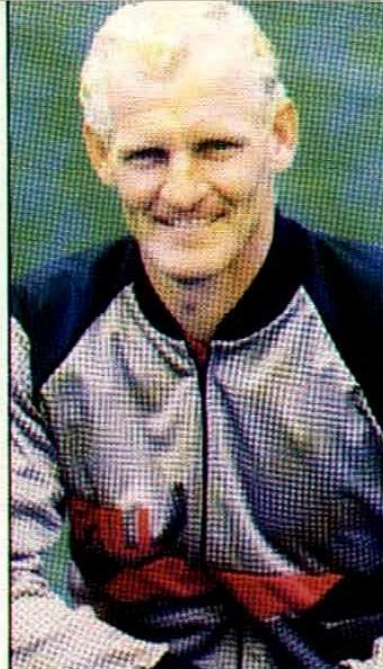
Saturday 24th February 1990

Result: Won 4-0

An even opening saw both sides having near misses but midway through the half a clearance was put back into the Brentford area by Lee Spalding and, from the scrabble, the ball ran loose to Paul Trollope to slide home the opening goal. A right wing move soon after ended when the ball came to Trollope on the edge of the box. He cleverly chipped the keeper for his, and our, second.

Continuing to play with plenty of spirit, we went further ahead when Liam Dixon hit the upright from a long throw from Darren Hall but Mark Lea was on hand to score from the rebound. Shortly after, a good move ended with Lee Spalding crossing to the far post where Alex Graham came through to complete the scoring.

A much improved performance,



John  
Trollope

playing with more spirit, a better awareness and more thought. This kind of performance is needed consistently, individually and as a team, then a more marked improvement will be made.

**Team:** Lovegrove, Hall, Graham, Lea, Churchward, Murray, Spalding, Howell, Dixon, Trollope, Walker.

**Substitutes:** Spence (for Howell in 65 minute), Jason Braidwood (for Trollope in 79 minute).



● Paul Trollope – scored two goals against Brentford in our 4-0 win.

### SOUTH EAST COUNTIES YOUTH TEAM SEASON 1989/90

| Date 1989      |  | Opponents              | Result      |
|----------------|--|------------------------|-------------|
| Sat Aug 19     |  | Reading                | 11 am H 1-1 |
| Sat 26         |  | Oxford United          | A 0-3       |
| Sat Sep 2      |  | Wimbledon              | 11 am H 0-3 |
| Sat 16         |  | Tottenham Hotspur      | 11 am H 3-0 |
| Sat 23         |  | Aldershot              | A 3-2       |
| Sat 30         |  | A.F.C. Bournemouth     | A 3-1       |
| Sat Oct 7      |  | Luton Town             | 11 am H 1-2 |
| Sat 14         |  | Colchester United      | A 0-2       |
| Sat 21         |  | Wimbledon              | A 0-0       |
| Sat 28         |  | Brighton & Hove Albion | 11 am H 1-0 |
| Sat Nov 4      |  | Northampton Town       | 11 am H 2-3 |
| Sat 11         |  | Southampton            | 11 am H 1-1 |
| Sat 18         |  | Bristol City           | A 2-1       |
| Sat 25         |  | Crystal Palace         | A 1-2       |
| Sat Dec 2      |  | Bristol Rovers         | A 3-2       |
| Sat 9          |  | Brentford              | H 2-1       |
| Sat 16         |  | Tottenham Hotspur      | A 0-1       |
| Sat 1990 Jan 6 |  | Reading                | A 0-2       |
| Sat 13         |  | Oxford United          | 11 am H 0-5 |
| Sat 20         |  | Wimbledon              | A -         |
| Sat 27         |  | Aldershot              | 11 am H 1-5 |
| Sat Feb 3      |  | Colchester United      | 12 noon H - |
| Sat 10         |  | A.F.C. Bournemouth     | 11 am H 1-3 |
| Sat 17         |  | Brighton & Hove Albion | A 4-0       |
| Sat 24         |  | Brentford              | A 0-4       |
| Sat Mar 3      |  | Bristol City           | 11 am H     |
| Sat 17         |  | Luton Town             | A           |
| Sat 24         |  | Southampton            | A           |
| Sat 31         |  | Crystal Palace         | 11 am H     |
| Sat Apr 7      |  | Northampton Town       | A           |

### SOUTH EAST COUNTIES LEAGUE CUP 1989/90

| Date 1989 |  | Opponents  | Result      |
|-----------|--|------------|-------------|
| Sat Sep 9 |  | Portsmouth | 11 am H 2-3 |

### MIDLAND YOUTH CUP 1989/90

| Date 1989   |  | Opponents           | Result |
|-------------|--|---------------------|--------|
| Wed Aug 30  |  | Peterborough United | A 3-0  |
| Tues Jan 23 |  | Nottingham Forest   |        |

### FA YOUTH CUP

| Date 1989  |  | Opponents  | Result     |
|------------|--|------------|------------|
| Mon Oct 30 |  | Portsmouth | 7 pm H 2-3 |

### SOUTH EAST COUNTIES LEAGUE

#### Division Two

|                        | P  | W  | D | L  | F  | A  | Pts |
|------------------------|----|----|---|----|----|----|-----|
| Crystal Palace         | 20 | 16 | 3 | 1  | 49 | 15 | 35  |
| Oxford United          | 19 | 14 | 2 | 3  | 52 | 21 | 30  |
| Colchester United      | 25 | 13 | 2 | 10 | 41 | 38 | 28  |
| Southampton            | 22 | 10 | 6 | 6  | 32 | 27 | 26  |
| Northampton Town       | 21 | 10 | 5 | 6  | 37 | 25 | 25  |
| Brighton & Hove Albion | 20 | 11 | 2 | 7  | 38 | 26 | 24  |
| Wimbledon              | 22 | 9  | 5 | 8  | 44 | 23 | 23  |
| Reading                | 22 | 10 | 3 | 9  | 34 | 25 | 23  |
| A.F.C. Bournemouth     | 23 | 8  | 5 | 10 | 39 | 37 | 21  |
| Luton Town             | 20 | 6  | 9 | 5  | 28 | 32 | 21  |
| Brentford              | 22 | 7  | 5 | 10 | 37 | 39 | 19  |
| Swindon Town           | 23 | 8  | 3 | 12 | 29 | 45 | 19  |
| Bristol Rovers         | 22 | 8  | 2 | 12 | 37 | 48 | 18  |
| Bristol City           | 22 | 7  | 3 | 12 | 27 | 33 | 17  |
| Tottenham Hotspur      | 25 | 7  | 2 | 16 | 30 | 52 | 16  |
| Aldershot              | 22 | 2  | 1 | 19 | 22 | 90 | 5   |

### SOUTHERN JUNIOR FLOODLIT CUP

| Date 1989  |  | Opponents            | Result |
|------------|--|----------------------|--------|
| Mon Sep 11 |  | West Bromwich Albion | A 0-2  |

Nationwide Anglia Building Society  
sponsor John Trollope's kit.

& YOUTHS





# COMMERCIAL STAFF

Commercial Secretary  
Robins Corner Manageress  
**Joyce Moore**  
Lottery Organiser  
**Dave Hollister**  
Superloot Organiser  
**Dennis Curtis**  
Lottery Assistant  
**Des Lloyd**

Welcome to the County Ground  
once again. Enjoy yourselves.

## JUST ARRIVED

New consignment of rugby style  
sweatshirts. Red with white stripe.  
(As worn by Fraser in West Ham  
programme). S, M, L, XL. £15.50

Red/White Harlequin rugby style.  
S, M, L, XL, XXL. £16.50

Available from the 'Robins Corner'  
souvenir shop, the Commercial  
Office and the North Stand Kiosk.

\*\*\*

## VIDEOS

Videos of all home matches can be  
obtained through the Commercial  
Department, Swindon Town F.C.,  
County Ground, Swindon.  
V.H.S. Only.  
Full Colour.  
Cash/Cheque with order.  
**Collected £11.00. p/p £1.25 extra.**  
EXCLUSIVE TO S.T.F.C.

\*\*\*

## SWINDON TOWN F.C.

### Programme Collectors

#### Away Match Programme

Anyone who previously purchased  
Swindon Town F.C. away match  
programmes from the Travel Club  
Offices can, until further notice,  
purchase them from 'The Robins  
Corner' shop before and after all  
First XI matches.

Programmes for our match with  
Barnsley on 10th February will be  
on sale on Sunday 18th February.

\*\*\*

## SPORTING DINNER

April 2nd 1990

at

### South Marston Country Club

Guest Speakers

Ian Darke and Garry Richardson  
of BBC Radio Sport

A few tickets are still available from  
The Commercial Department,  
Swindon Town Football Club,  
County Ground, Swindon. Tel: (0793)  
642984 ext. 30 or 31.

\*\*\*



**Doug  
Buswell**

★ ★ ★ ★ ★ ★ ★ ★ ★ ★  
★ New Consignment of ★  
★ 'OSSIE ARDILES' ★  
★ Sweatshirts ★  
★ arrived in ★  
★ 'The Robins Corner' ★  
★ Souvenir Shop ★  
★ Black/Red & Red/Black ★  
★ Colour Combinations ★  
★ Sizes: Medium & Large ★  
★ Price £16.50 ★  
★ Also available from ★  
★ The Commercial Department ★  
★ & North Stand Kiosk ★  
★ ★ ★ ★ ★ ★ ★ ★ ★ ★

## Today's Sponsor

### THE HOLIDAY INN PIPERS WAY SWINDON

The Directors of Swindon  
Town Football Club would  
like to express their  
gratitude to

**The Holiday Inn**  
for their generosity in  
sponsoring today's match.

**SWINDON TOWN  
CLUB CALL  
0898 12-16-40**

\*\*\*

## Today's Mascot



Name ..... David Jones  
Age ..... 14 years  
Address ..... Learnington Spa  
Warwickshire  
Favourite Team ..... Swindon Town  
2nd Favourite Team ..... Aston Villa  
Favourite Player ..... Alan McLoughlin  
2nd Favourite Player ..... David Platt



# THE WESSEX CONSERVATORY.



## A GAMES ROOM FOR THE CHILDREN WITH TOUGHENED GLASS FOR SAFETY'S SAKE.



Yes, a Wessex Conservatory is a superb place for children to play.

Not just because it's light and airy but, with toughened glass, it's as safe as houses.

It also makes an extra living room for all the family.

A room that needs the minimum of maintenance because it never needs a lick of paint, just the occasional wipe.

And, because it has a unique glazing system, it controls ventilation and keeps the weather at bay.

Another unique feature, a glass treatment called "Clear-Shield," not only makes the glass easy to clean but also helps it stay clean.

What's more, they carry a ten year guarantee and they're also made to measure.

You see, we specialise in making individual conservatories and never try around to convert standard models.

Most people can see through that little game.

So, for further details, contact Wessex Aluminium Limited, Hawksworth, Swindon SN2 1DZ. Telephone: (0793) 644633.

**WESSEX**  
**CONSERVATORIES**

Tailor-made by the specialists



# SWINDON TOWN

Manager: **Ossie Ardiles**



# BRADFORD CITY

Manager: **Terry Yorath**  
Colours: **Claret & Amber**

TEAM  
CHECK

**FRASER DIGBY.** ..... Rated at £1.5 million recently by Western Daily Press journalist Phil Simpson.



**PAUL TOMLINSON.** ..... The former Sheffield United keeper made his debut against Swindon in our 2-0 defeat at Valley Parade in 1987.

**DAVID KERSLAKE.** ..... The London-born full-back is a former England Youth and Under-21 International.



**BRIAN MITCHELL.** ..... Experienced defender who made 65 Premier League appearances for Aberdeen, and has made over 100 so far for City.

**PAUL BODIN.** ..... His goal against A.F.C. Bournemouth is the only League penalty awarded to the 'Town' this season up to last Saturday.



**GAVIN OLIVER.** ..... Took over at left-back recently from Brian Tinnion. Has now made over 150 appearances for the club.

**ALAN McLOUGHLIN.** ..... Expected to make his debut for the Republic of Ireland in the 'B' International against England later this month.



**GREG ABBOTT.** ..... Versatile player who can play in either a full-back or midfield role. Scored once this season - in City's 3-2 defeat at Port Vale.

**COLIN CALDERWOOD.** ..... Ever-present this season, the former Mansfield defender has been as consistent as ever in the centre of the 'Town' defence.



**LEE SINNOTT.** ..... Widely regarded as one of the Division's best central defenders. Subject of a £450,000 bid from West Bromwich Albion recently.

**JON GITTENS.** ..... £40,000 signing from Southampton. His assets are his outstanding pace and tackling ability.



**DAVE EVANS.** ..... Has formed an excellent central-defensive partnership with Lee Sinnott. Over 200 League appearances for City in his career.

**TOMMY JONES.** ..... Missed the first two matches of the season but has played in every League game since. His classy touches can open the most stubborn defence.



**MARK AIZLEWOOD.** ..... Was injured whilst scoring City's goal against us at Valley Parade on September 30th. Made 70 League appearances for his previous club, Leeds United.

**DUNCAN SHEARER.** ..... Has scored 7 goals in 7 games against today's opponents, including 4 in one match for previous club Huddersfield.



**ALAN DAVIES.** ..... A member of the Manchester United side which defeated Brighton in the 1983 F.A. Cup Final.

**STEVE WHITE.** ..... Came on as substitute to score the Town's late equaliser in the 1-1 draw with today's opponents at Valley Parade in September.



**MARK LEONARD.** ..... City's leading scorer this season with 7 in total which is level with the now-departed Jimmy Quinn.

**ROSS MACLAREN.** ..... Was ever-present in Derby County's 1986/87 Second Division Championship-winning team. Can he achieve a similar feat with Swindon?



**IAN McCALL.** ..... Made 5 League appearances and scored once for Glasgow Rangers last season. Made his debut in the 1-1 draw with Wolves on January 13th.

**STEVE FOLEY.** ..... 'Scouser' Steve has been in ever improving form since sustaining an injury towards the end of last season.



**TONY ADCOCK.** ..... Player of the Year at Northampton last season, but is finding life tough in the higher division with just 3 goals in his first 21 games.

**DAVE HOCKADAY.** ..... Had made 235 League appearances for Swindon prior to Saturday's match against Port Vale. 6 goals in that time.



**PAUL JEWELL.** ..... Scored the late equaliser for City against Swindon at Valley Parade last season.

**FITZROY SIMPSON.** ..... Returned from a long lay-off with an injured knee to play at Portsmouth.



**REFEREE**  
Mr. R. L. Harner

**LINESMAN RED TRIM**  
Mr. B. L. Marsh



**LINESMAN YELLOW TRIM**  
Mr. S. S. Pearce

**RESERVE OFFICIAL**  
Mr. A. Mills



## IMPORTANT SAFETY NOTICE

**IMPORTANT SAFETY ANNOUNCEMENTS BY THE CLUB MANAGEMENT OVER THE PUBLIC ADDRESS SYSTEM WILL BE PRECEDED BY A LOUD SIGNAL TO CATCH THE ATTENTION OF SPECTATORS.**